

CHINESE SNUFF BOTTLES FROM TWO PRIVATE AMERICAN COLLECTIONS

Marcia J. Howard and the Joanna Lau Sullivan Trust

Monday March 14, 2016

New York



Bonhams

NEW YORK



CHINESE SNUFF BOTTLES FROM TWO PRIVATE AMERICAN COLLECTIONS

Marcia J. Howard and the Joanna Lau Sullivan Trust

Monday March 14, 2016 at 10am

New York

BONHAMS

580 Madison Avenue
New York, New York 10022
bonhams.com

PREVIEW

Thursday March 10, 10am to 5pm
Friday March 11, 10am to 5pm
Saturday March 12, 10 am to 5pm
Sunday March 13, 10am to 5pm

SALE NUMBER: 23744
Lots 6001 - 6102

CATALOG: \$35

BIDS

+1 (212) 644 9001
+1 (212) 644 9009 fax

To bid via the internet please visit
www.bonhams.com/23744

Please note that telephone bids must be submitted no later than 4pm on the day prior to the auction. New bidders must also provide proof of identity and address when submitting bids. Telephone bidding is only available for lots with a low estimate in excess of \$1000.

Please contact client services with any bidding inquiries.

Please see pages 73 to 77 for bidder information including Conditions of Sale, after-sale collection and shipment.

INQUIRIES

Bruce Maclaren, Senior Specialist
+1 (917) 206 1677
bruce.maclaren@bonhams.com

Olivia Hamilton, Head of Sale
+1 (917) 206 1613
olivia.hamilton@bonhams.com

Nicholas Rice, Specialist
+1 (917) 206 1622
nicholas.rice@bonhams.com

Dessa Goddard, Director
Head, Asian Art Group U. S.
+1 (415) 503 3333
dessa.goddard@bonhams.com

Lingling Shang, Consultant
+1 (415) 503 3208
lingling.shang@bonhams.com

Automated Results Service
+1 (800) 223 2854

ILLUSTRATIONS

Front Cover: Lots 6060, 6055, 6059, 6063 and 6062
Inside Front Cover: Lot 6008
Inside Back Cover: Lot 6086
Back Cover: Lots 6031, 6016, 6045, 6041, 6038, 6027 and 6048

INTERNATIONAL CHINESE CERAMICS AND WORKS OF ART TEAM



Colin Sheaf



Dessa Goddard



Asaph Hyman

ASIA AND AUSTRALIA



Xibo Wang
Hong Kong



Gigi Yu
Hong Kong



John Chong
Hong Kong



Susie Quek
Singapore



Yvett Klein
Sydney

EUROPE



Benedetta Mottino
London,
New Bond Street



Sing Yan Choy
London,
New Bond Street



Edward Luper
London,
New Bond Street



Maria Baskhanova
London,
New Bond Street



James Hammond
London,
Knightsbridge



Rachel Hyman
London,
Knightsbridge



Rosangela Assennato
London,
Knightsbridge



Ben Law Smith
London,
Knightsbridge

USA



Bruce MacLaren
New York



Olivia Hamilton
New York



Nicholas Rice
New York



Edward Wilkinson*
New York



Mark Rasmussen*
New York



Doris Jin Huang*
New York



Henry Kleinhenz
San Francisco



Daniel Herskee
San Francisco



Ling Shang
San Francisco



Tiffany Chao
Los Angeles

ASIA REPRESENTATIVES



Hongyu Yu
Beijing



Summer Fang
Taipei



Bernadette Rankine
Singapore



Akiko Tsuchida
Tokyo

* Indian, Himalayan & Southeast Asian Art

CHINESE SNUFF BOTTLES FROM THE MARCIA J. HOWARD COLLECTION

Lots 6001 - 6050



Lots 6001, 6002, 6003, 6006 and 6010

The Rod and Marcia Howard collection of Chinese snuff bottles began with a surprise Christmas gift from husband to wife in the early 1970's. Although their attraction to snuff bottles began with trips to the annual Palmer House gift fair in Chicago where they encountered a dealer who carried Chinese snuff bottles along with other Asian art. Owning a camera and gift store in Fort Wayne, Indiana that also carried collectables like Hummel porcelain figurines, Baccarat and Lalique crystal, the Howards witnessed collecting as a passion as well as a compulsion.

From the first bottle their collection would grow to over a hundred carefully selected examples, with guidance and thoughtful suggestions from noted dealers Robert Hall, Hugh Moss, Robert Kleiner and Clare Chu among others. Ultimately all collections become a reflection of the collector, and a survey of the Howard snuff bottles shows a predilection for early glass as well as an excellent eye for good jades. In later years the connoisseurship of Chinese snuff bottles would broaden Marcia's interest into other avenues of the arts of Asia.

The Howards became active members of the International Chinese Snuff Bottle Society, attending their first convention in Kansas City in 1976. After their first, their presence at the annual convention was nearly unbroken attending Hong Kong in 1978, Philadelphia 1979, Honolulu 1981, New York 1982, Toronto 1983, Los Angeles 1984, Dallas 1985, Baltimore 1986, London 1987, San Francisco 1988, Chicago 1989, Hong Kong 1990, Boston 1991, Vancouver 1992, New York 1993 and Beijing 1996. Their continual attendance after 1996 both fulfilled their love of travel and hobby of collecting. The Howards would become friends with many of their fellow enthusiasts, forging close bonds with Robert and Janine Chilcott and Jack and Florence Rotholz, among others. In addition, a selection of the Howards' favorite snuff bottles composed the cover on the June 1979 Journal.

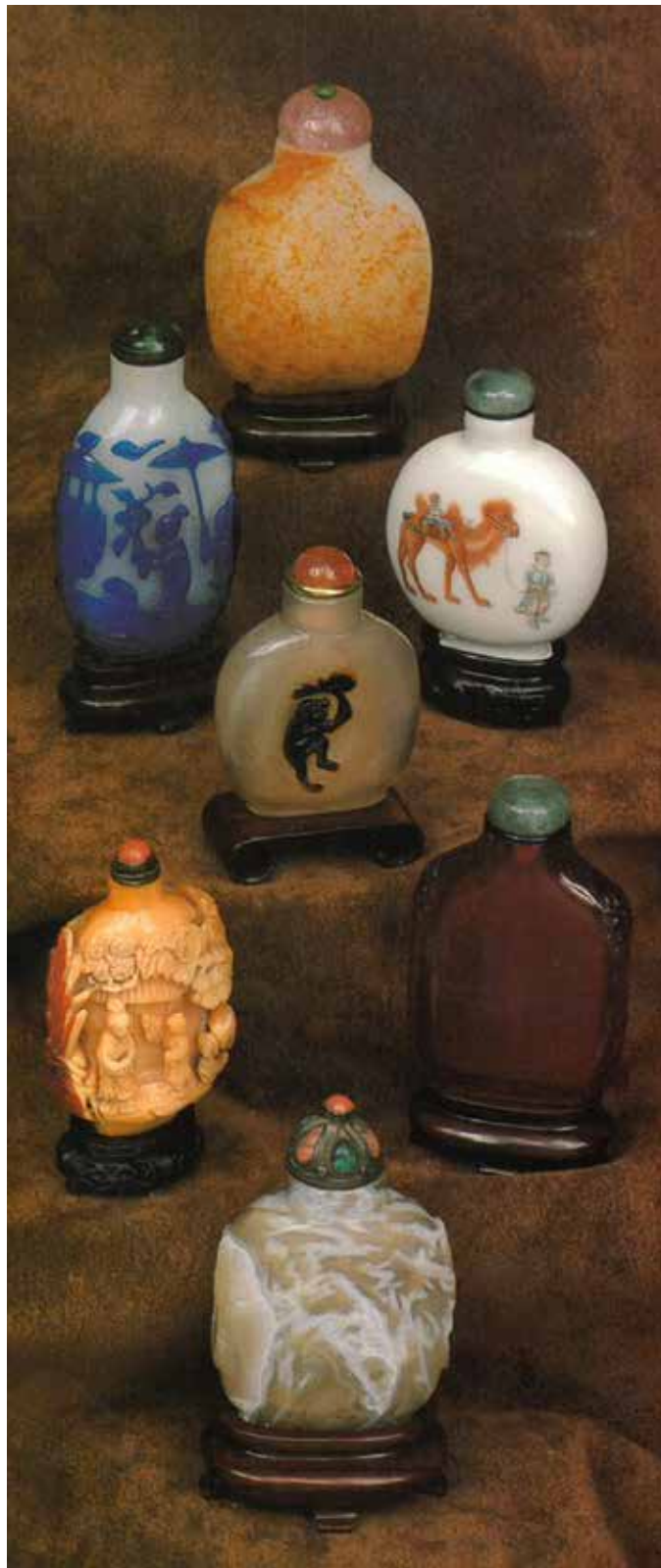


Rod and Marcia Howard

雖說霍華德夫婦 (Rod and Marcia Howard) 所收藏的第一支鼻煙壺是一九七零年代初由先生贈與太太的一份意外聖誕禮物，然而兩人對鼻煙壺的愛好早在那之前就已經萌芽：當時夫婦倆每年固定前往在帕爾瑪酒店 (Palmer House) 舉行的芝加哥禮品展，在會場中結識了一位銷售鼻煙壺及其他中國藝品的經銷商，由於夫婦倆在印第安納州的偉恩保 (Fort Wayne, Indiana) 經營攝影禮品店，銷售德國喜姆 (Hummel) 瓷偶、法國巴卡拉 (Baccarat and Lalique) 水晶等收藏品，兩人對於藝術收藏極度熱愛，甚至到了不可自拔的地步。

兩人所收藏的鼻煙壺，由一支慢慢變成上百支，每支都經過精挑細選，並由 Robert Hall、Hugh Moss、Robert Kleiner、Clare Chu 等知名專家指導購入，從藏品中亦可看出收藏家的個性與愛好，細看霍華德夫婦所珍藏的鼻煙壺便能察覺兩人偏愛早期玻璃製品，並對於玉製品品味甚佳，霍華德夫人到了晚年甚至將其對鼻煙壺的愛好拓展至對其他亞洲藝術品的收藏。

霍華德夫婦 1976 年參加了肯薩斯市的國際中國鼻煙壺協會年會後，從此活躍於協會，與會紀錄從不間斷：從 1978 的香港年會、1979 的費城年會、1981 的檀香山年會、1982 的紐約年會、1983 的多倫多年會、1984 的洛杉磯年會、1985 的達拉斯年會、1986 的巴爾的摩年會、1987 的倫敦年會、1988 的舊金山年會、1989 的芝加哥年會、1990 的香港年會、1991 的波士頓年會、1992 的溫哥華年會、1993 的紐約年會、到 1996 的北京年會，他們幾乎次次參加，96 年後他們仍然年年與會，一方面藉此縱情旅遊，一方面也滿足其對收藏的愛好，過程中他們與著名收藏家成為摯友，其中包括奇爾考特夫婦 (Robert and Janine Chilcott) 與羅特霍茲夫婦 (Jack and Florence Rotholz)，霍華德夫婦所收藏的鼻煙壺代表作，曾出現於 1979 年 6 月鼻煙壺協會會刊的封面。



June 1979 cover of the *Journal of the International Chinese Snuff Bottle Society* featuring a selection of Howard snuff bottles, (now lots 6047, 6028, 6009, 6016 and 6021 in this sale)



6001 (two views)

6001

A POLYCHROME ENAMELED PORCELAIN SNUFF BOTTLE

Imperial, Jingdezhen kilns, Daoguang mark and of the period 1821-1850

Of compressed globular form with a cylindrical neck, rounded lip, finely painted on one side with two frolicking Pekinese, the verso depicting a pair of doves by graceful bamboo; the slightly recessed foot neatly inscribed with the *four-character mark*.

2 1/4in (5.7cm) high

\$3,000 - 5,000

Provenance

Robert Hall, 12th November 1985

The theme of paired Pekinese dogs and doves suggests conjugal bliss and was a subject very much favoured by the Daoguang emperor. Similar motifs are seen on the contemporary porcelains of the period and snuff bottles made from other materials as well.

Compare an enameled and slip-decorated Yixing snuff bottle from the Collection of Barbara and Marvin Dicker, sold in our New York rooms, 16 March 2015, sale 22949, lot 1028.

1821-1850年 清道光 御製瓷胎釉彩繪犬鴿紋鼻煙壺
《道光年製》 馨紅篆書款



6002 (two views)

6002

A FAMILLE ROSE ENAMELED PORCELAIN 'KATYDID' SNUFF BOTTLE

Imperial, Jingdezhen kilns, Daoguang mark and of the period 1821-1850

The ovoid bottle rising to a gently waisted neck, rounded lip, sensitively painted in enamels with black penciled details depicting a katydid on an overturned cage, the reverse featuring the same insect with long thin antennae, the concave foot with the *four-character mark* in seal script.

2 3/4in (7cm) high

\$4,000 - 6,000

Compare another Daoguang-marked bottle, decorated with a katydid on a cage on one side, and a single katydid on the reverse, illustrated by Moss, Graham, Tsang, in *A Treasury of Chinese Snuff Bottles, The Mary and George Bloch Collection*, Vol. 6, Part 3, Hong Kong, 2008, pp. 690-1, no. 1318.

The katydid, pronounced *guoguo* in Chinese, creates a pun for the word 'country' (*guo*). The image of katydid with a yellowish or gold cage produces a rebus for the phrase of *jinzhong baoguo*, which can be interpreted as 'to be loyal to one's country'. When a bottle with this design was gifted to a court official by the emperor it would be seen as both a recognition and a reminder of the essential virtue that any official figure had to carry.

1821-1850年 清道光 御製粉彩蠶蠟鼻煙壺 《道光年製》 礬紅篆書款



6003 (two views)

6003

**A MOULDED GREEN ENAMELED PORCELAIN 'DRAGON'
SNUFF BOTTLE**

Imperial, Jingdezhen kilns, Daoguang mark and of the period
1821-1850

Of compressed globular form with a flat gilt lip, waisted neck, molded
in low relief around the side in black and green enamel with a dragon
chasing a flaming pearl, the teeth and claws highlighted in white, the
recessed base with the *four-character mark* in iron-red; ; an original
matted watercolor rendering of the snuff bottle is offered with this lot.

2 1/8in (5.4cm) high

\$5,000 - 7,000

Provenance

Clare Lawrence, London, 28th October 1993

1821-1850年 清道光 御製模印綠彩遊龍戲珠圖鼻煙壺 《道光年製》
礬紅篆書款

6004

**AN ENAMELED AND INCISED
PORCELAIN 'DRAGON' SNUFF BOTTLE**

1820-1900

Of rounded rectangular form, its cylindrical neck incised with a key-fret band, slightly convex lip, glazed interior, painted around the side walls in iron-red with a five-clawed dragon diving through incised waves, all above a border of further wave patterns surrounding a gently inwarded oval foot ring, the recessed base decorated with stylized clouds.

2 1/2in (6.4cm) high

\$2,000 - 3,000

The body of the dragon on the present bottle is painted in a fashion that is partially interrupted and covered by incised wave patterns, creating a dynamic effect in presenting a mighty dragon charging through turbulent seas.

Similarly decorated porcelain bottles occur in several important collections, including a nearly identical bottle from the Collection of Brooks and Dorothy Cofield, illustrated on the cover of *The International Chinese Snuff Bottle Society Journal*, August 2015; further examples are illustrated by Helen White, *Snuff Bottles from China. The Victoria and Albert Museum Collection*, p. 257, p. 119, and Hugh Moss, *Chinese Snuff Bottles From the Collection of the Rt. Hon. The Marquess of Exeter, K.C.M.G.*, 1974, p.37, fig. C.31.

1820-1900年 瓷胎饕紅刻暗花龍紋鼻煙壺

6005

**AN ENAMELED PORCELAIN 'DRAGON'
SNUFF BOTTLE**

Jingdezhen kilns, 1800-1860

The cylindrical bottle supported on a circular foot ring, rising to a straight neck above its slightly sloping shoulder, wide mouth, rounded lip, glazed interior, painted continuously around the side with a pair of vigorous five-clawed dragons confronting each other against an aubergine enameled ground densely painted with crashing waves.

3in (7.6cm) high

\$1,500 - 2,000

Provenance

Jin Hing & Co., Los Angeles, 31st October 1986

Previously in the Huntington Collection, by repute

Exhibited:

Pacific Asian Museum, Pasadena, 1982-1983, by repute

1800-1860年 茄地釉彩龍紋鼻煙壺



6004 (two views)



6005



6006 (two views)

6006

**AN ENAMELED AND SLIP-DECORATED
YIXING SNUFF BOTTLE**

1800-1860

Of rounded rectangular form with a cylindrical neck, flat lip, splayed oval foot ring, each main side with a recessed panel, decorated in a buff slip depicting a hut nestled in a serene landscape and a cluster of nandina and other foliage respectively, the remainder of the body covered with cobalt blue enamel.

2 9/16in (6.6cm) high

\$2,500 - 4,000

1800-1860年 宜興紫砂掛藍釉堆料加彩山水
花卉紋鼻煙壺



6007

6007

**A METAL-LINED AND SLIP-DECORATED
YIXING SNUFF BOTTLE**

1800-1860

Of upright cylindrical form, the body of the bottle covered entirely with chocolate-brown Yixing clay except the waisted neck and flat lip that expose the metal lining, the side walls worked with buff slip, carved to depict a figure fishing at a bank surrounded by a landscape strewn with vegetation and trees sheltering a pavilion; the circular foot enclosing a recessed base covered with crackled white glaze.

2 7/8in (7.3cm) high

\$1,200 - 1,800

Provenance

John Ford Associates, Inc., Far Eastern Art,
20th November 1978

1800-1860年 宜興紫砂金屬胎堆料加彩漁人
垂釣圖鼻煙壺



6008 (two views)

6008

A FAMILLE ROSE ENAMELED AND GILT-DECORATED PORCELAIN SNUFF BOTTLE

Qianlong mark, 1790-1850

Of spade form, with a short waisted neck, gilt-painted convex lip, each main side with a conforming gilt-framed panel, worked in enamels of various colors, richly painted with a garden scene depicting a fluffy cat on rocks surrounded with bamboo and seasonal flowers, and with two butterflies hovering nearby; the reverse painted with two magpies perched on a blooming prunus tree and further decorated with large peony blossoms, all separated by a yellow ground band on the narrow sides filled with additional floral and scroll designs, the flat rectangular base with the *six-character mark* in seal script painted in iron red.

2 1/4in (5.7cm) high

\$5,000 - 7,000

Provenance

Robert Hall, 4th January 1990

Compare a snuff bottle designed in the same format and with very notable similarities in the composition of the painted enamel, but on a gilt background, dated Qianlong period, from the Collection of Y. F. Yang, published and illustrated in "Interior Landscapes: the Art of the Chinese Snuff Bottle", Shawn Eichman, International Chinese Snuff Bottle Society, *Journal*, Spring 2011, fig.14, p.7.

1790-1850年 粉彩描金毫窰圖鼻煙壺
《大清乾隆年製》 礬紅篆書款



6009 (two views)

6009

AN ENAMELLED PORCELAIN SNUFF BOTTLE

Imperial, Jingdezhen kilns, Daoguang mark and of the period 1821-1850

Of moonflask form with a straight neck, slightly concave lip, oval foot ring, glazed interior; painted in soft-hued enamels and iron-red on one side with a Manchu groom leading a camel laden with hunting rifles attached to the saddle, the reverse painted with a Manchu huntsman on a horse and leading a dog by a leash, the recessed foot inscribed with the *four-character mark* in seal script.

2 1/4in (5.7cm) high

\$3,000 - 5,000

Like the decorations on many traditional Chinese arts, the carefully chosen and painted theme on the bottle carries multiple hidden meanings. For example, the dog ('*gou*' or '*quan*') and the saddle ('*ma'an*') together creates a pun for '*anquan*', which means safety. The camel ('*luotuo*') with two humps ('*feng*') suggests abundance and happiness ('*feng*' and '*le*'). The quiver ('*jiandai*') conveys the hope that many generations ('*dai*') will be blessed with all these good things.

For snuff bottles with similar Manchu equestrian imagery decoration, with Daoguang marks and of the period, see Robert Kleiner, *Chinese Snuff Bottles. A Miniature Art from the Collection of Mary and George Bloch*, p. 211, no. 153; and *Snuff Bottles. The Complete Collection of Treasures of the Palace Museum*, p. 224, no. 341.

1821-1850年 清道光 御製瓷胎釉彩滿人狩獵圖鼻煙壺 《道光年製》 礬紅篆書款



6010 (two views)

6010

A FAMILLE ROSE ENAMELED PORCELAIN SNUFF BOTTLE

1912-1949

The flattened shield-shaped bottle rising to a waisted neck, its wide everted lip and spreading oval foot ring with a gilt finish, each of the main sides decorated with a raised panel delicately painted in gilt and enamels with flowers and butterflies, against a ground filled with repeating patterns in iron-red, the high shoulders molded with two faux animal head-and-ring handles, the recessed foot bearing an apocryphal *Guyue Xuan* mark.

1 3/4in (4.5cm) high

\$3,000 - 5,000

Provenance

Bob C. Stevens Collection, Sotheby Parke Bernet, *Fine and Important Chinese Snuff Bottles from the Collection of Bob C. Stevens, Part III*, New York, 25 June 1982, lot 61

Illustrated

Arts of Asia, Jan-Feb., 1982, p. 91, no 4

The painting motif and style on this snuff bottle is reminiscent of those often appearing on porcelain vases and plaques during the Republic period. Compare a very similar porcelain snuff bottle in the Bentley Collection, bearing a *Qianlong nian zhi* mark, illustrated in the catalog of *The Bentley Collection of Chinese Snuff Bottles*, the Asian Art Studio, Inc., 2008, p. 100.

1912-1949年 瓷胎粉彩花蝶紋鼻煙壺



6011 (two views)

6011

**A FAMILLE ROSE ENAMELED
PORCELAIN 'KATYDID'
SNUFF BOTTLE**

Imperial, Jingdezhen kilns, Daoguang mark and of the period, 1821-1850
The well-built bottle of flattened spherical form, with a waisted neck, slightly convex lip, oval foot ring, the interior glazed, skillfully painted on either side with a katydid in varied shades of green, purple, and black, their eyes highlighted in gilt paint, the recessed base with the *four-character mark* in iron-red.

2 1/4in (5.7cm) high

\$1,500 - 2,500

1821-1850年 清道光 御製粉彩蠊蠊紋鼻煙壺 《道光年製》 磬紅篆書款



6012

6012

**A FAMILLE ROSE ENAMELED
PORCELAIN SNUFF BOTTLE**

Jingdezhen kilns, Daoguang mark and of the period, 1821-1850

Of compressed globular form with a cylindrical neck, gilt-painted lip, oval foot ring, the front and back painted in enamels of various shades presenting the Eighteen Luohan with their attributes beneath a descending dragon, the narrow sides molded with two mock animal mask-and-ring handles, the base with the *four-character mark* in seal script.

2 3/8in (6.2cm) high

\$1,000 - 1,500

1821-1850年 清道光 瓷胎粉彩十八羅漢鼻煙壺 《道光年製》 篆書款



6013 (two views)

6013

AN INSIDE-PAINTED GLASS SNUFF BOTTLE

Zhou Leyuan, 1890

Of rounded rectangular form with a cylindrical neck, flat lip, splayed oval foot ring, painted in black ink and subdued colors depicting a teapot, planters, and a covered vessel casually placed near weathered rocks, the reverse decorated with a tranquil lotus pond with slender leafy and blossoming branches gracefully bent as if by a gentle breeze; both sides poetically inscribed, one side signed *Zhou Leyuan* and followed with a small red seal mark, the reverse dated *gengyin*, corresponding to 1890.

2 5/8in (6.8cm) high

\$4,000 - 6,000

Provenance

Robert Kleiner, Belfont Company (Hong Kong) Ltd., 4th November 1990

Zhou Leyuan, founder of the Beijing School, was one of the finest artists in the medium of the inside-painted snuff bottle. His most prolific period appears to have been between 1890 and 1892. The present bottle provides a wonderful example demonstrating his ability to create a technically and aesthetically compelling work in a small and challenging space, as well as his ever elegant sensibility and deep understanding of the *literati* ideals in painting.

1890年 周樂元作 玻璃內畫蓮池圓鼻煙壺 《周樂元作》款



6014 (two views)

6014

AN INSIDE-PAINTED ROCK CRYSTAL SNUFF BOTTLE

Ding Hong

The compressed globular bottle supported on an oval foot ring, with a cylindrical neck, recessed lip, painted to one side with a scene of two boys watching swallows in flight while riding on water buffaloes half-submerged in a river framed by reeds swaying in the breeze, the verso depicting a herd boy sitting on a rock next to a goat under the shade of a large willow, signed *Ding Hong*, followed with a small red seal mark.

2 3/16in (5.6cm) high

\$1,000 - 1,500

Ding Hong was one of the alternative names of Ding Guiling, a female student of Ye Bengqi. She was active in Beijing in the 1960's.

丁桂玲作 水晶內畫童子牧牛圖鼻煙壺



6015

6015

AN INSIDE-PAINTED GLASS SNUFF BOTTLE

Ye Family Studio, 1924

The rounded square bottle with a raised and recessed panel to each side, the interior painted in soft-hued colors depicting a continuous winter scene with a lone fisherman sitting in his *shanban* floating on a placid river and snow-covered mountains stretching out in the distance, one side dated *jiazi zhongxia* (midsummer of 1924), bearing a signature *Ye Zhongsan*, followed with a red seal mark.

2 1/2in (6.4cm) high

\$1,500 - 2,500

1924年 葉氏家族風格 玻璃內畫漁人垂釣鼻煙壺

《甲子仲夏葉仲三》款



Lots 6022, 6024, 6038, 6016, 6026, 6039, 6042

CHINESE SNUFF BOTTLES FROM TWO AMERICAN PRIVATE COLLECTIONS | 17



6016

**6016
A SHADOW CHALCEDONY SNUFF BOTTLE**

1780-1860

Well-hollowed, of rounded square form supported on a splayed oval foot ring, the mostly straight neck with a naturally indented area marked with a triangle patch of brownish inclusions, the lip slightly recessed, one side carved through the dark inclusions in the stone to reveal a monkey holding a leafy peach branch.

2in (5.1cm) high

\$2,000 - 3,000

Provenance

Phyllis Kaufman, California, 14th October 1976

Illustrated

International Chinese Snuff Bottle Society, *Journal* June 1979, front cover

1780-1860年 瑪瑙巧雕靈猴獻桃圖鼻煙壺



6017

**6017
A SHADOW CHALCEDONY 'HAWK' SNUFF BOTTLE**

1780-1850

Well-hollowed, of rounded square form standing on a short oval foot ring, with a cylindrical neck, recessed lip, cleverly manipulating the dark inclusions in the gray-toned matrix, carved to one side with an intimate scene depicting a hawk perched on rocks looking down at a younger bird; the reverse left undecorated.

2 1/2in (6.4cm) high

\$3,000 - 5,000

Provenance

Robert Hall, 13th June 1988

1780-1850年 瑪瑙巧雕老鷹紋鼻煙壺

6018

A COMEAL CHALCEDONY 'JUJUBE AND PEANUT' SNUFF BOTTLE

1780-1880

Well hollowed, of rounded pebble form with natural irregularities, with carefully rendered, curvaceous incised lines to present a large jujube, and superimposed with raised, realistically rendered peanuts carved from opaque brown and beige patches in the stone.

2 1/8in (5.4cm) high

\$2,000 - 3,000

Provenance

House of Ivory, Chicago, 2nd September 1977

The Chinese term for jujube, *zaozi*, is a homophone for 'early son', and peanut is a pun for 'giving birth'. Being combined together, the jujube and peanut can thus be interpreted as 'may you soon give birth to a distinguished son'. As such jujube and peanut are popular snacks or simply part of the 'ritual' decoration used at wedding ceremonies in China.

Compare a similar bottle from the Paul Braga Collection, sold at our Hong Kong rooms, 24 November 2014, sale 20524, lot 64. See also a similar example in the Mary and George Bloch Collection, illustrated by H.Moss, V.Graham, K.B.Tsang, in *A Treasury of Chinese Snuff Bottles: The Mary and George Bloch Collection*, Vol.2, Quartz, Hong Kong, 1998, p. 402, no. 330.

1780-1880年 瑪瑙巧雕早生貴子鼻煙壺

6019

A SHADOW CHALCEDONY 'BIRD' SNUFF BOTTLE

1780-1850

Well-hollowed, the flattened globular bottle raised on a spreading oval foot ring, with a straight neck, recessed lip, utilizing the natural dark inclusions in the semi-translucent gray stone, carved to the front to display two birds and rock formations, the reverse naturally forming an intriguing zen style image with an ink stroke-like dot within an irregular circle; uneven surfaces.

2 1/2in (6.4cm) high

\$3,000 - 5,000

Provenance

Robert Hall, 4th July 1989

1780-1850年 瑪瑙巧雕鳥紋鼻煙壺



6018 (two views)



6019



6020 (two views)

6020

**A RARE ENAMELED CARAMEL GLASS
SNUFF BOTTLE**

Guyue Xuan mark, 1770-1799

Of spade form with a waisted neck, slightly concave lip, painted in thin enamels of varied and subdued shades around the sides to present a lush and tranquil lotus pond, the neatly recessed foot with three very faint characters reading *Guyue Xuan* (Ancient Moon Pavilion).

2 3/16in (5.6cm) high
\$6,000 - 8,000

Provenance

Jin Hing & Co, Los Angeles, 28th October 1996

The myths surrounding Guyue Xuan ware have been explored and discussed by many academics, connoisseurs and collectors. Nevertheless conclusions as to where, when, and how it was started, developed, and became established remain an intriguing mystery open for debate and speculation. For references on Guyue Xuan snuff bottles, see "Mysteries of the Ancient Moon", Hugh Moss, *The International Snuff Bottle Society Journal*, Spring 2006, pp. 16-33, and Lilla Perry, *Chinese Snuff Bottles*, pp.95-99.



6021

A comparable snuff bottle with Guyue Xuan mark, from the Barbara and Marvin Dicker Collection, sold in our New York rooms, 16 March 2015, sale 22949, lot 1054. Compare also, a very closely related bottle from the Bloch Collection, sold by Sotheby's Hong Kong, 26 May 2014, lot 1044, and a similar bottle illustrated by Robert Hall, *Chinese Snuff Bottles XII*, fig. 64, p. 44-45.

1770-1799年 淺醬料胎畫瑤蓮池紋鼻煙壺
《古月軒》款

6021

AN AMBER SNUFF BOTTLE

1780-1880

Well-hollowed, of rounded rectangular form with a short neck, flat lip, carefully defined flared foot ring, the narrow sides flanked with two finely carved mock lion mask-and-ring handles; the crizzled amber of an attractive uniform golden-brown color.

2 1/2in (6.4cm) high
\$2,500 - 4,000

Provenance

Phyllis Kaufman, California, 14th October 1976

Illustrated

International Chinese Snuff Bottle Society, *Journal*, June 1979, front cover

1780-1880年 琥珀雙耳獸面鼻煙壺



6022 (two views)

6022

A DUAL-OVERLAY GLASS 'EIGHT HORSES OF MUWANG' SNUFF BOTTLE

1820-1880

The milky-white bottle of compressed globular profile, with a cylindrical neck, flat lip, slightly tapered and carefully finished oval foot ring, skillfully carved through the dual overlay of ochre and black with the eight horses sensitively rendered in various poses either on a grassland or supported by overhanging rocky platforms, and separated by two gnarled pine trees at the narrow sides.

2.5/8in (6.7cm) high

\$2,000 - 3,000

Provenance

J. W. A. International, Inc., Oriental Fine Arts, Florida, 31st October 1986

1820-1880年 涅白地套褐黑雙色料穆王八駿圖鼻煙壺

6023

A 'TORTOISESHELL' GLASS SNUFF BOTTLE

1730-1850

Of tapering ovoid form, set on a flat oval foot, with a cylindrical neck, neatly finished flat lip, with striking dark brown dappling and striation sandwiched between two layers of variegated, transparent golden brown glass resembling tortoiseshell.

2in (5.1cm) high

\$1,500 - 2,500

Provenance

Robert Kleiner, Belfont Company (Hong Kong) Ltd., 4th November 1990

1730-1850年 玻璃仿玳瑁攪色鼻煙壺



6023



6024 (two views)

**6024
A GREEN OVERLAY 'SNOWFLAKE' GLASS SNUFF BOTTLE**

1780-1850
Of sloping ovoid form with a slightly waisted neck, flat lip, oval foot ring, masterfully carved through the bluish-green overlay around the side depicting a dignified eagle atop protruding rocks emerging from a turbulent ocean, the sun rising behind crashing waves, and a bat in flight amid cloud-scrolls; all against a cloudy ground suffused with bubbles and opaque white flecks.

2 7/8in (7.4cm) high
\$2,500 - 3,500

Provenance

Robert Hall, 3rd November 1990

The eagle in Chinese art during the Qing dynasty is known to symbolize the hero. Its pronunciation in Chinese, *ying*, is a component for *yingxiong* (hero). The motif of a solemn-looking eagle on rocks or combined with a bear was particularly favored by the Qianlong emperor but was also used as a motif during the Jiaqing and later periods.

1780-1850年 雪霏地套綠料英雄圖鼻煙壺



6025

**6025
A GOLD AVENTURINE-SPLASHED GREEN GLASS SNUFF BOTTLE**

Imperial Palace Workshops, Beijing, 18th century
Of flattened globular form with a wide mouth, oval countersunk foot, the interior skillfully blown to a water-drop form, the rich transparent green body suffused with golden flecks.

2in (5.1cm) high
\$1,800 - 2,500

十八世紀 宮廷作坊 透明綠料灑金鼻煙壺



6026

6026

A TRANSPARENT GREEN GLASS SNUFF BOTTLE

1750-1820

The heavy, tapering form bottle supported on a neatly finished oval foot ring, the narrow sides carved with two raised chilong, the glass of an attractive lime-green color.

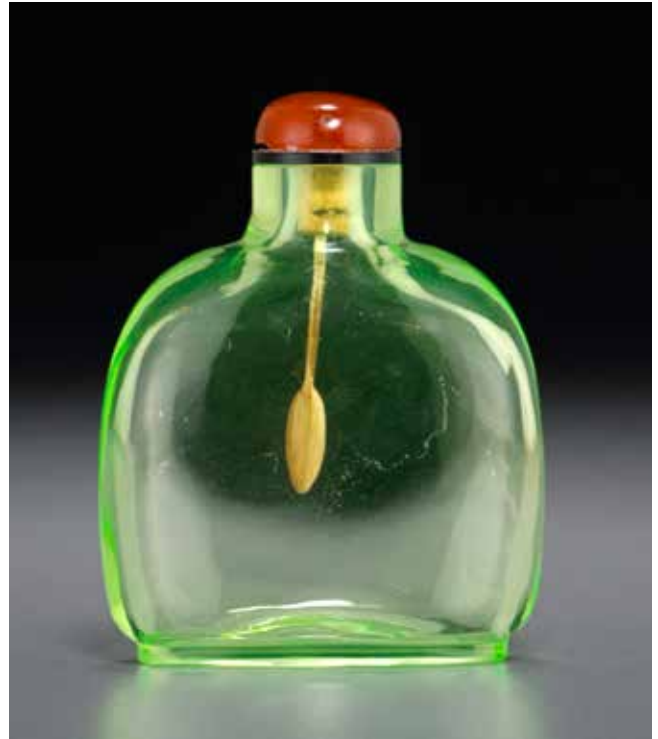
2 1/2in (6.4cm) high

\$2,000 - 3,000

This bottle belongs to a distinguished group of glass bottles from the 18th century which appears to have been continuously made through the early 19th century. They are often seen in green color, sometimes in blue, red, and amethyst purple. The characteristic features of the group include the carved 'chi' dragons on the narrow sides and their heavier weight, which suggests that these bottles were likely carved from solid glass blocks rather than being blown.

For a similar example in purple color and a further discussion on this group of bottles, see Moss, Graham, Tsang, *A Treasury of Chinese Snuff Bottles*, Vol.5, Glass, no. 836. Another two similar glass bottles, one in green, the other of blue color, from the Paul Braga Collection, sold in our Hong Kong rooms, 24 November 2012, sale 20524, lots 19 and 63.

1750-1820年 透明淡綠料雕螭龍耳鼻煙壺



6027

6027

A LIME-GREEN GLASS SNUFF BOTTLE

1750-1820

The simple square form bottle supported on a carefully rounded oval foot ring, with a straight neck, evenly recessed lip, finished to a very attractive, fine and sleek effect.

2 9/16in (6.6cm) high

\$1,000 - 1,500

1750-1820年 透明青綠料光素鼻煙壺



6028 (two views)

6028

A BLUE OVERLAY WHITE GLASS SNUFF BOTTLE

1800-1880

Of rounded rectangular form with a cylindrical neck, flat lip, splayed oval foot ring, carved through the sky-blue overlay applied to the 'snowflake' suffused milky white ground, depicting a lively scene of figures enjoying an outing at a garden with a large blooming prunus tree, a narrow pathway leading to a pavilion situated on a precipitous rocky outcropping.

2 3/4in (7cm) high

\$2,000 - 3,500

Illustrated

International Chinese Snuff Bottle Society, *Journal*, June 1979, front cover

1800-1880年 雪霏地套藍料仕人出遊圖鼻煙壺

6029

A GOLD AVENTURINE-SPLASHED BLUE GLASS SNUFF BOTTLE

Imperial, Palace Workshops, Beijing, 18th century

Of compressed globular form with a cylindrical neck, wide mouth, slightly recessed lip and foot, the sapphire-blue ground in stunning contrast to the sparkling gold splashes.

1 7/8in (4.8cm) high

\$3,000 - 5,000

十八世紀 宮廷作坊 透明藍料灑金鼻煙壺



6029

6030

AN AQUAMARINE GLASS SNUFF BOTTLE

1780-1850

The ovoid bottle supported on a splayed oval foot ring, its neck gently narrowing towards a flat lip, carved in rounded relief on each main side with two intertwined sinuous *chilong*, the shoulders flanked with two mock lion mask-and-ring handles.

2 1/4in (5.7cm) high

\$2,500 - 4,000

Provenance

Jin Hing & Co., Los Angeles, 28th October 1989

1780-1850年 海藍寶料螭龍紋鼻煙壺

6031

A BRICK-RED SUFFUSED CLEAR GLASS SNUFF BOTTLE

Possibly Imperial, attributed to Palace Workshops, Beijing, 1730-1820

Of flattened rounded form with a cylindrical neck, wide, flat lip and well-finished oval foot ring, the bubble-suffused glass accented with opaque brick-red dapplings.

2 1/8in (5.4cm) high

\$2,000 - 3,000

Provenance

Robert Kleiner, Belfont Company (Hong Kong) Ltd., 19th October 1991

1730-1820年 擬宮廷作坊 玻璃灑緋紅色鼻煙壺



6030



6031

6032

A PINK AND WHITE GLASS SNUFF BOTTLE

1750-1850

The bottle of circular outline, with a waisted neck, flat lip, oval foot ring, the outer edge and shoulder with a ridged design, framing a gently recessed circular panel to the front and back, the translucent white glass diffused with pink cloud-like patches.

2 1/2in (6.4cm) high

\$3,000 - 5,000

Provenance

Robert Hall, 12th October 1991

Previously in the Marian Meyer Collection, no. 514

Illustrated

Robert Hall, *Chinese Snuff Bottles II, including an Important selection from the Marian Meyer Collection*, London, 1989, no. 77

1750-1850年 白料攪粉色鼻煙壺



6032



6033

6033

A RUBY-RED GLASS SNUFF BOTTLE

1780-1900

Of flattened rounded form, with a cylindrical neck, flat lip, oval foot ring, each main side carved with a spirited dragon in profile, one holding a *lingzhi* sprig in its mouth.

2 1/8in (5.3cm) high

\$2,000 - 3,000

1780-1900年 寶石紅料雕龍啣靈芝紋鼻煙壺



6034 (two views)

6034

A CARVED YELLOW GLASS SNUFF BOTTLE

Possibly Imperial, attributed to Palace Workshops, Beijing, 1730-1820

The flattened ovoid bottle tapering toward a straight neck, with a flat lip, oval foot ring, carved on one side with a bat hovering over a deer, reversed with a strutting crane under pine branches issuing from a crowned hillside.

2in (5.1cm) high

\$2,000 - 3,000

Provenance

Robert Kleiner, Belfont Company (Hong Kong) Ltd., 29th November 1989

1730-1820年 擬宮廷作坊 黃料雕福祿雙全及松鶴常春圖鼻煙壺



6035 (two views)



6036

6035

A RED OVERLAY GLASS SNUFF BOTTLE

1750-1850

Of ovoid form, with a very subtly waisted neck, flat lip, decorated in well-carved red overlay depicting a large and lively carp creatively presented with its body wrapping around the base of the bottle and extending to the other side, elegantly set against the cloudy and bubble-suffused bottle.

2 1/4in (5.7cm) high

\$2,500 - 4,000

1750-1850年 雪霏地套紅料鯉魚紋鼻煙壺

6036

A FACETED RUBY-RED GLASS SNUFF BOTTLE

Possibly Imperial, attributed to Palace Workshops, Beijing, 1720-1800

Rising from a hexagonal flat foot to a cylindrical neck, flat lip, the octagonal-profiled bottle carved overall with a symmetrical pattern of geometric surfaces.

2in (5.1cm) high

\$3,000 - 5,000

Provenance

Robert Kleiner, Belfont Company (Hong Kong) Ltd., 24th November 1989

1720-1800年 擬宮廷作坊 寶石紅料磨稜鼻煙壺



6037 (two views)

6037

A DOUBLE OVERLAY OF WHITE ON BLACK 'SNOWFLAKE' GLASS SNUFF BOTTLE

1780-1850

Of compressed globular form with a waisted neck, flat lip, rounded oval foot ring, carved around the sides with a continuous scene depicting a bear gazing at a hawk perched on rocks, and a crane poised on rocks behind a deer, all in a rugged landscape with gnarled pine trees.

2 1/2in (6.4cm) high

\$3,000 - 4,000

Provenance

Hugh Moss Limited, London

16th November 1982

The design of two or more layers of differently colored overlay is achieved by placing splashes of differing color on the body and then carving as appropriate. One theory is that the double overlay technique matured during the Daoguang period, on the basis of the close similarity of the designs to those found on porcelains of the period. As repeated colors and designs became familiar, greater complexity was required in order to continue to stimulate interest. Robert Kleiner, *Chinese Snuff Bottles* p. 26-27.



6038

Compare a similar white on black overlay on a 'snowflake' ground bottle, with deer, crane, and pine design, illustrated by H. Moss, *Chinese Snuff Bottles From the Collection of the Rt. Hon. The Marquess of Exeter, K.C.M.G.*, 1974, fig. G.106, p. 92. Refer also to a double-overlay 'snowflake' glass snuff bottle decorated with a similar motif, from the Collection of Barbara and Marvin Dicker, sold in our New York rooms, 16 March 2015, sale 22949, lot 1043

1780-1850年 雪霏地套黑料英雄及六合同春圖鼻煙壺

6038

A MINIATURE YELLOW GLASS SNUFF BOTTLE

Imperial, Palace Workshops, Beijing, 1730-1799

The gently tapering bottle supported by a carefully finished splayed foot ring, with a waisted neck, wide mouth, delicate thin lip; the body of lemon-yellow tone.

1 3/4in (4.5cm) high

\$3,000 - 4,000

Compare two similar miniature yellow glass snuff bottles published and illustrated by Hugh Moss, *Chinese Snuff Bottles From the Collection of the Rt. Hon. The Marquess of Exeter, K.C.M.G.*, 1974, figs. G.28 and G.29, p. 64.

1730-1799年 宮廷作坊 小型黃料瓶形鼻煙壺

6039

**A BROWN OVERLAY WHITE GLASS
SNUFF BOTTLE**

Yangzhou School, 1840-1900

Of compressed spherical form with a waisted neck, flat lip, oval foot ring, delicately carved through the thin dark brown overlays to the milky white ground on each side with an auspicious theme presented with a ruyi scepter, fish, a pine branch, flowers, a pair of ducks, and offerings of tea and fruits, each side with either a four-character inscription or a circular cartouche.

2 1/8in (5.3cm) high

\$4,000 - 6,000

Provenance

Hugh Moss Limited, London, 5th
December 1981

The four-character inscription reads *niannian ruyi* (wishes being granted year after year). The two-character cartouche reads *ping'an* (peace).

1840-1900年 揚州作涅白地套褐料「年年如意」圖鼻煙壺



6039 (two views)

6040

**A MULTI-COLOR OVERLAY GLASS
SNUFF BOTTLE**

1740-1820

The elongated tapering bottle with a cylindrical neck, the inner side of the lip slightly recessed toward its fairly wide mouth, the opalescent ground decorated in orange-red, blue, brown, yellow and some dark highlight overlays, exquisitely carved with circular reserves on the main sides filled with either flowers or the *bogu* motif, the narrow sides and the foot featuring three registers of lithe *chilong*.

3in (7.6cm) high

\$1,500 - 2,500

Provenance

Eric Young Collection II, Sotheby's London,
13 October 1987, lot 17

1740-1820年 雪霏地套多色料博古圖鼻煙壺



6040



6041 (two views)

6041

**A YELLOW GLASS OVERLAY
SNUFF BOTTLE**

1780-1860

Of flattened oval form, with a waisted neck, flat lip, rounded oval foot ring, meticulously carved through a layer of opaque yolk-yellow overlay against a transparent golden yellow ground, presenting a continuous scene of monkeys clambering over trees and rockworks, trying to pick the fruit of longevity.

2 5/8in (6.7cm) high

\$4,000 - 6,000

Provenance

Robert Hall, 18th October 1991

1780-1860年 黃地套卵黃料靈猴嬉戲圖鼻煙壺



6042

6042

A YELLOW GLASS SNUFF BOTTLE

Imperial, Palace Workshops,
Beijing, 1730-1799

Of compressed globular form with a waisted neck, wide mouth, flat thin lip, its splayed oval foot ring neatly crafted, the simple, elegant bottle of uniform lemon-yellow color.

1 5/8in (4.2cm) high

\$5,000 - 7,000

Provenance

Robert Hall, 18th October 1991

1730-1799年 宮廷作坊 黃料鼻煙壺



Lots 6044, 6045, 6043, 6048, 6049, 6046



6043

6043

A CARVED JADEITE 'LANDSCAPE' SNUFF BOTTLE

Well-hollowed, of ovoid form with a cylindrical neck, flat lip, rounded oval foot ring, the side walls carved in relief and incised to depict a magnificent mountainous landscape scene with a pagoda rising amongst lavish trees; the stone of mottled apple-green and white coloration.

2 1/8in (5.4cm) high

\$6,000 - 9,000

翠玉雕山水紋鼻煙壺

6044

**A GREEN AND RUSSET JADE
SNUFF BOTTLE**

1780-1880

Of compressed globular form, the neck spreading gently towards a recessed lip, oval foot ring, the green stone with an opaque brown area to one of its main sides, carved in relief with two undulating *chilong*, the reverse decorated with a monkey offering a peach to a *Shoulao* seated under a gnarled pine tree, the lower section with a long russet stained fissure line along an irregular U-shaped band of paler color inclusions, giving an appearance of mist rising from a valley, the narrow sides surmounted with two faux lion mask-and-ring handles.

2 1/4in (5.7cm) high

\$6,000 - 9,000

Provenance

Robert Hall, 29th October 1996

Illustrated

International Chinese Snuff Bottle Society, *Journal*, Autumn, 1996, Robert Hall advertisement

1780-1880年 青玉雕靈猴獻壽圖鼻煙壺



6044 (two views)

6045

**A CARVED GREEN AND RUSSET JADE
SNUFF BOTTLE**

1720-1820

Well-hollowed and with a narrow mouth, the rounded rectangular bottle with a tapering neck slightly contracting towards a flat lip, oval foot ring, utilizing the dramatic earthy brown inclusions in the evenly-hued green stone, finely carved to each side with a monkish figure seated on a cloud-encircled rocky platform, one subduing an advancing tiger, the other holding an alms bowl in his right hand, his left hand pointing at a dragon descending from a dense cloudbank, the narrow sides with two raised, finely defined lion mask-and-ring handles.

2 3/4in (7cm) high

\$6,000 - 9,000

Provenance

Hugh Moss Limited, London, 16th November 1982

The two figures on this bottle represent two of the Eighteen Arhats: *Fuhu Luohan* (taming tiger Luohan), and *Xianglong Luohan* (taming dragon Luohan).

1720-1820年 青玉雕祥龍伏虎羅漢圖鼻煙壺



6045 (two views)



6046 (two views)

6046

A CARVED WHITE AND RUSSET JADE SNUFF BOTTLE

1780-1850

Well-hollowed, the bottle with sloping shoulders standing on an oval foot ring, with a very slightly waisted neck, flat lip, the front and back worked with the russet skin in the stone, skillfully carved in relief with a bearded official and his attendant standing under a pine tree, and a stag in a craggy landscape.

2 7/16in (6.3cm) high

\$10,000 - 15,000

Provenance

Robert Hall, 8th November 1988

1780-1850年 白玉雕仕人松下圖鼻煙壺

6047

A WHITE AND RUSSET JADE SNUFF BOTTLE

Circa 1780-1880

Retaining the natural form of the original pebble, the bottle with a conforming neck and foot ring, the surfaces undecorated leaving one side covered with a layer of mottled russet skin, the remaining surfaces of uniform pale grayish-white tone with two patches of milky-white inclusions.

2 3/8in (6cm) high

\$4,000 - 6,000

Illustrated

International Chinese Snuff Bottle Society, *Journal*, June 1979 front cover

約1780-1880年 白玉帶皮鼻煙壺



6047 (two views)

6048

A FINE WHITE JADE SNUFF BOTTLE

Possibly Imperial, attributed to Palace Workshops, Beijing, 1750-1820

Impressively well-hollowed, the carefully shaped spade-form bottle with a short waisted neck, the recessed wide lip and conforming foot finely polished, its body covered with raised bosses and wrapped with a brocade sash carved with exquisite floral diapers and tied to one side with a trailing ribbon; evenly-toned white stone.

2 3/8 in (6cm) high

\$6,000 - 8,000

1750-1820年 擬宮廷作坊 白玉雕包袱紋鼻煙壺



6048



6049 (two views)

6049

A CARVED WHITE JADE SNUFF BOTTLE

1760-1850

Well-hollowed, of rounded rectangular form with a cylindrical neck, flat lip, oval foot ring, both of the main sides carved in rounded relief with ascending and descending *chi* dragons, each with bifurcated tails and finely incised manes, separated by two highly stylized dragons at the narrow sides; the milky white stone well-polished to a soft luster.

2 5/8in (6.7cm) high

\$10,000 - 15,000

Provenance

Robert Hall, 4th July 1989

1760-1850年 白玉雕螭龍紋鼻煙壺

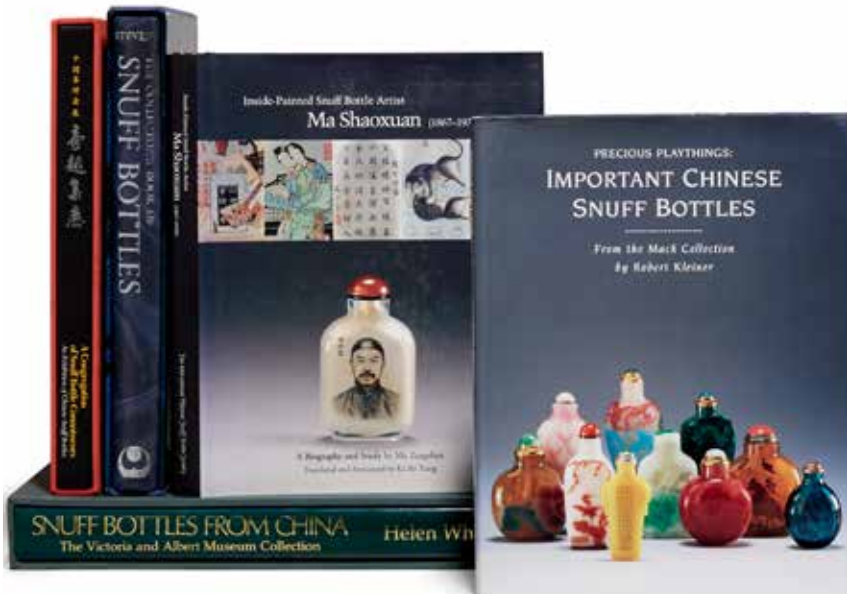
6050

A LIBRARY OF BOOKS ON SNUFF BOTTLES

Including 53 titles, primarily dealer catalogs, auction catalogs, and museum exhibitions, *an itemized list available on our website or by request.*

\$1,200 - 1,800

鼻煙壺叢書



6050

CHINESE SNUFF BOTTLES FROM THE JOANNA LAU SULLIVAN TRUST

Lots 6051 - 6102



Lot 6063



Joanna Lau Sullivan 1921-2015

JOANNA LAU SULLIVAN: A TRIBUTE

Joanna Lau Sullivan was a Hawaii girl whose parents ran a small grocery on Oahu. From this modest beginning she and her husband Maurice “Sully” Sullivan began the expansion and development of a family business which is today Hawaii’s largest grocery retailer with thirty-two “Foodland” and “Sack and Save” stores statewide, more than one hundred and fifty retail stores across nine states and four thousand employees. It was the realization of the American dream, a family accomplishment significantly bolstered by Joanna’s business acumen, hard work and wise counsel.

Joanna and “Sully” generously shared their prosperity with all of Hawaii’s people. Following Sully’s death, Joanna and her family continued their far reaching community support, providing resources for a wide range of causes and organizations associated with education, health, and human services and the arts.

At the Honolulu Museum of Art an endowment was established which provides support for exhibitions, staff salaries and conservation related to the operation of “The Maurice J. Sullivan Family Gallery of Chinese Art.” Included among the works on display is a special selection of Joanna’s cherished snuff bottles. In addition, funding for the care and maintenance of the “Joanna Lau Sullivan Courtyard” is assured. “Joanne’s Courtyard” was for her a source of great joy and pride, a unique legacy enjoyed by tens of thousands of visitors each year.

She was a savvy business woman and a generous benefactor with a keen eye for beauty. There was absolutely no guile or pretense about Joanna. She was a gracious, charming and warm human being, whose life made all of ours far richer and more meaningful.

George R. Ellis
Director of Emeritus Honolulu Museum of Art

JOANNA LAU SULLIVAN AND WANG XISAN

Joanna Lau Sullivan (Liu Yue fu) met Wang Xisan in 1981 when he visited Honolulu for the first time, participating in the thirteenth annual convention of the International Snuff Bottle Society. Joanna was so impressed by his masterful execution of inside painted snuff bottles that she became one of his most enthusiastic patrons. Already a collector of fine snuff bottles, she augmented her collection with examples of his inside painted bottles, which are offered here in this catalog. She commissioned him to paint her favorite subjects, including the Watermoon Guanyin (lot 6064), the rooster, her birth year and the zodiac (lots 6056 and 6059), children at play (lot 6065) historical figures and legends from both Chinese and Hawaiian history (lots 6058, 6061 and 6062) and animal subjects (lots 6051, 6053, 6054, 6057, 6059, 6060). Her most extensive commission was for Master Wang to paint portraits of all her family members, including her own portrait together with her beloved husband, “Sully”. To commemorate her patronage and kind support for his work, Wang Xisan painted a bottle with his own self portrait, with an eloquent dedication to her (lot 6063).

Among the numerous tributes written about Joanna Lau Sullivan, John Gilmore Ford’s essay in the Winter 2015 edition of the Winter 2015 Journal of the International Chinese Snuff Bottle Society sets out in detail the depth and breadth of her philanthropic commitment to multiple causes and organizations in her community outside of her passion for snuff bottles. He writes that, in acknowledgment of her efforts, Mrs. Sullivan was name Philanthropist of the Year by the Association of Fundraising Professionals-Honolulu Chapter in 2008 and again in 2013. He reiterates the high regard for her held by the Honolulu Museum curatorial staff and Board, eloquently expressed by George Ellis, Director in his tribute published above. The legacy of Joanna Lau Sullivan’s philanthropic efforts endures through her family’s actions and activities in support of the Hawaii community and the Museum.



劉月初與王習三, 1984

紀念劉月初女士

父母在歐胡島經營小雜貨舖的劉月初 (Joanna Lau Sullivan)，本是一個家境平凡的夏威夷女孩，然其在婚後與夫婿蘇利文 (Maurice “Sully” Sullivan) 共同拓展家族事業，經過一番努力，最終成為夏威夷最大超市連鎖店的東主，旗下擁有三十二家 Foodland 與 Sack ‘N Save 超市，事業並擴及全美九個州一百五十家店舖，員工多達四千名。劉月初可算是實現了美國夢，以其打拚精神、商業頭腦與用人智慧而得以光宗耀祖。

劉月初與蘇利文向來慷慨地將自身財富與全夏威夷州民分享，蘇利文辭世後，劉月初與家人仍繼續熱衷社區捐助，為各種教育、健保、人文藝術等組織與活動熱心提供贊助，對當地影響深遠。

劉月初家人曾捐出款項贊助檀香山藝術博物館 (Honolulu Museum of Art)，為其名下之蘇利文家族中國藝廊 (Maurice J. Sullivan Family Gallery of Chinese Art) 營運所需之員工薪資、展出作品與藝品修護提供資金。其中展出的作品包括劉月初所珍藏的部分鼻煙壺。此筆款項也為博物館中的劉月初中式庭院 (Joanna Lau Sullivan Courtyard) 提供保養的費用。

劉月初是一位精明的商界女豪傑，也是一位審美眼光超群的慷慨金主，她為人真誠、個性質樸、待人親切和藹又熱心，她的付出，讓許多人的生命增添了意義，也增添了光彩。

檀香山藝術博物館榮譽退休館長
George R. Ellis

劉月初與王習三

劉月初 (Joanna Lau Sullivan) 首次遇見王習三，是在王大師 1981 年前來檀香山參加第十三屆國際中國鼻煙壺協會年會時。初見面時，劉月初對於王大師的鼻煙壺內畫技巧讚譽有加，很快成了他最忠實的買主。當時劉月初已是頂級鼻煙壺的收藏大家，而遇見王習三後，更是收購了大量的內畫鼻煙壺，在本圖錄中可略窺一二。當年劉月初聘請王習三幫她在鼻煙壺內反筆畫出她最喜愛的主題，其中包括水月觀音 (編號6064)、公雞、生肖與星座 (編號6056 與 6059)、孩童玩耍 (編號6065)、中國與夏威夷之歷史與神話人物 (編號6058、6061、6062)，和動物 (編號6051、6053、6054、6057、6059、6060)。她還聘雇王大師為她畫所有家人的畫像，其中包括劉月初本人及其夫婿蘇利文 (Maurice “Sully” Sullivan) 的畫像。為了感謝劉月初的長期支持，王習三也在鼻煙壺中畫了自己的畫像送給劉女士，並親自題字表達謝意 (編號6063)。

讚譽劉月初的文章不計其數。其中，由約翰·福特 (John Gilmore Ford) 在國際中國鼻煙壺協會期刊2015年冬季刊中所寫的一篇短文，對於劉女士在收藏鼻煙壺之外，對於家鄉夏威夷的諸多慈善機構與社區團體所做出的大量深度貢獻表示讚許。福特寫道，劉月初於2008年和2013年兩度被籌款專業人員協會檀香山分會 (Association of Fundraising Professionals Honolulu Chapter) 選為年度慈善家 (Philanthropist of the Year)。該文亦提到，檀香山藝術博物館 (Honolulu Museum of Art) 全體上下對於劉女士評價甚高——讀者可參考館長艾利斯 (George Ellis) 在本圖錄中的撰文做對比。劉月初女士的家人如今依然支持著本地的博物館與社區活動，可說是承傳了劉女士的慈善家精神。



6051 (two views)

6051

AN INSIDE-PAINTED ROCK CRYSTAL SNUFF BOTTLE

Wang Xisan, 1967, the bottle: 1780-1880

The slender bottle narrowing towards a cylindrical neck beneath a recessed lip, rounded oval foot, painted in ink and watercolors with a continuous scene of eight horses in an open landscape with *wutong* trees and blooming lily flowers rising behind perforated rocks, titled to one narrow side *Ba Jun Tu* (Eight Stallions), dated *dingwei nian qiu* (autumn of year 1967), signed *Xisan*, with one seal *Xisan*.

2 1/4in (5.7cm) high

\$3,000 - 5,000

The 'Eight Stallions' subject is repeated often in Wang Xisan's works. For another bottle with the same subject by Wang Xisan, see *The Art of the Chinese Snuff Bottle. The J & J Collection*, Moss, Graham, Tsang, Vol. II, p. 733, no. 450, see also two comparable examples illustrated in the exhibition catalog titled *Great Master Boutique Exhibition Wang Xisan*, published in 2011, p. 20, nos. 021 and 022.

The subject of eight horses refers to the steeds of Mu Wang, the fifth king of the Zhou dynasty. The legend of the 'Eight Horses of Mu Wang' refers to the horses that drew the carriage of Mu Wang when he made a grand tour of his kingdom. According to *Shi Yi Ji* (Chronicles of Forgotten Times), the eight horses were identified as follows: "Juedi, who races without raising dust; Fanyu, who overtakes birds at speed; Benxiao, who covers ten thousand miles overnight; Yueying, who trails the sun incessantly; Yuhui, who wears a radiant coat; Chaoguang, who casts ten shadows from his body; Tengwu, who rides on clouds; and Jianyi, who possesses a pair of wings. When spurred, they take flight like lightning. When checked by the reins, they slow to canter. Together they carry the emperor to all corners of the world."

壺:1780-1880 內畫:1967年王習三作
水晶內畫八駿圖鼻煙壺 《丁未年秋習三作》款

6052

AN INSIDE-PAINTED SMOKY CRYSTAL SNUFF BOTTLE

Wang Xisan, 1968, the bottle: 1780-1880
The handsome bottle of tall rectangular form with rounded corners, standing on an oval foot ring, the interior painted in subdued colors with a continuous snowy landscape, detailed with tiny figures, one side dated *wushen dong yue* (winter month in 1968), signed *Wang Xisan*, with one seal *Wang*.
2 3/8in (6cm) high
\$3,000 - 5,000

The present bottle is another exceptional example of Wang Xisan's work from his early years. The chosen smoky crystal marvelously matches the painted theme, adding a magical effect in creating a hazy, gloomy atmosphere in a winter scene.

壺:1780-1880年 內畫:1968年王習三作
褐色水晶內畫寒江垂釣圖鼻煙壺 《戊申冬月王習三作》款



6052 (two views)

6053

AN INSIDE-PAINTED ROCK CRYSTAL SNUFF BOTTLE

Wang Xisan, 1967
Of elongated tapering ovoid form, the interior painted with eight hounds in various poses near a gnarled pine tree in a continuous landscape dotted with flowers and vegetation, one side titled *Ba Quan Tu* (Eight Hounds), dated *dingwei* (1967), signed *Wang Xisan*, with one seal reading *Xisan*.
2 1/4in (5.7cm) high
\$2,000 - 3,000

1967年 王習三作 水晶內畫「八犬圖」鼻煙壺
《丁未年王習三作》款



6053 (two views)



6054 (two views)

6054

AN INSIDE-PAINTED SMOKY CRYSTAL SNUFF BOTTLE

Wang Xisan, 1967, the bottle, 1820-1900
The well-hollowed bottle of tall rectangular form with sloping shoulders, supported on a well-finished oval foot ring, its cylindrical neck surmounted with a recessed lip, the interior painted to the forefront with numerous grazing horses in an open grassland, the background defined with trees and a mountain-surrounded watercourse, one side titled *Bai Ma Tu* (One Hundred Horses), dated *dingwei* (1967), signed *Wang Xisan* with his studio name *Yihu Zhai*, one red seal mark reading *Xisan*.

2 5/8in (6.7cm) high

\$3,000 - 5,000

壺:1820-1900年 內畫:1967年王習三作 茶色水晶內畫「百馬圖」鼻煙壺
《丁未年王習三作於一壺齋》款



6055 (two views)

6055

AN INSIDE-PAINTED GLASS SNUFF BOTTLE

Wang Xisan, 1971, the bottle: 1780-1880
The rounded rectangular bottle rested on a splayed oval foot, deftly painted to the interior of each main side with a scholar and a young boy in a lush garden, or in an enchanted landscape setting, one side with an inscription matching the scene, dated *xinhai* (1971), signed *Xisan*, with One Bottle Studio name, one red seal mark reading *Xisan*.
(2 3/4in (7cm) high).

\$3,000 - 5,000

Many of Wang Xisan's finest works date from the 1960's to the early 1970's. Although they were created at an early stage of Wang's career, his artistic ability was already honed to a very fine degree.

It is not unusual to find Wang Xisan's early works being executed on fine old bottles during the late 1950's to 1970's, when fine old crystal, chalcedony, and amber bottles were available but not quite marketable. For another inside-painted rock crystal bottle by Wang Xisan, dated 1964, see Moss, Graham, Tsang, *The Art of the Chinese Snuff Bottle. The J & J Collection*, vol. II, pp. 731-732, no, 449.

壺:1780-1880年 內畫:1971年王習三作 玻璃內畫仕童子圖鼻煙壺 《辛亥臘八習三作於一壺齋》款

6056

**AN INSIDE-PAINTED GLASS
SNUFF BOTTLE**

Wang Xisan, dated Year of the Rooster, 1981
The rounded rectangular bottle flanked with two faux lion mask-and-ring handles in high relief, separating two similar paintings to the front and verso, each portraying roosters, rocks, and large peony blossoms; one side titled *Bao Xiao Tu* (Announcing the Daybreak), signed *Wang Xisan*, with one seal mark, the other side with a dedicatory inscription, signed, two red seal marks.

2 3/8in (6.1cm) high

\$2,000 - 3,000

The dedication inscription on the bottle reads *Ying Liu Yuechu nushi zhu ji'nian hua Xiongji Tu*. It can be translated as 'Portrayal of Roosters are painted upon the request of Madam Liu Yuechu in the Year of Rooster'.

Each of the Chinese zodiac signs rotates every twelve years. Without a specific context, the dating can indicate 1969, 1981, 1993, etc. See the forward in the exhibition catalog entitled *Great Master Boutique Exhibition Wang Xisan* published in 2011, p. 5, for a note about Joanna Lau Sullivan's first meeting with Wang Xisan in 1981. The present bottle is among the commissioned works in Joanna's collection that was painted for her to celebrate the Year of Rooster, her birth year.

1981年 王習三作 玻璃內畫報曉圖鼻煙壺
《於一壺齋習三》款

6057

**AN INSIDE-PAINTED RUTILATED
CRYSTAL SNUFF BOTTLE**

Wang Xisan, 1982

The rectangular form bottle carefully hollowed with walls of even thickness, painted to the interior on one side with two curly-haired puppies near rocks and leafy flowers, one red seal mark, the reverse featuring a Pekinese watching two butterflies in flight, dated *renshu* (1982), signed *Wang Xisan* with studio name *Yihu Zhai*.

2 1/2in (6.4cm) high

\$4,000 - 6,000

1982年 王習三作 水晶內畫犬蝶紋鼻煙壺
《王戌口口月作於一壺齋王習三》款



6056 (two views)



6057 (two views)



6058 (two views)

6058

AN INSIDE-PAINTED CRYSTAL SNUFF BOTTLE

Wang Xisan, 1982

Of compressed form with a flat lip and sloping shoulders, thin oval foot rim, one side painted with a portrait in ink of Sun Yat-sen (1866-1925) inscribed, dated *renxu* (1982), and signed *Wang Xisan* with two painted seals, reversed with a calligraphic inscription imitating the style of Sun Yat-sen and signed Sun Wen, with a painted seal reading *Sun Wen zhi yin*.

2 3/4in (7cm) high

\$2,500 - 4,000

The inscription on the reverse translates "Mighty are the great trends of the world, those who follow them flourish, those who oppose them die", and is one of the most well-known aphorisms by Sun Yat-sen.

1982年 王習三作 水晶內畫孫中山像鼻煙壺
《王戌秋月王習三恭繪》款

6059

AN INSIDE-PAINTED GLASS SNUFF BOTTLE

Wang Xisan, 1982

The rounded square bottle with a cylindrical neck, flat lip, spreading oval foot ring, masterfully and meticulously painted to the interior with the twelve zodiac animal figures in a wonderland-like landscape with trees and foliage, one side titled *Shi Er Shu* (Twelve Zodiacs), dated *renshu chuqiu*, (early autumn of 1982), signed *Yihu Zhai Zhu Xisan zuo* (painted by Xisan at the One Bottle Studio), two red seal marks.

2 1/2in (6.4cm) high

\$3,000 - 5,000

1982年 王習三作 玻璃內畫十二生肖圖鼻煙壺
《王戌初秋一壺齋主習三作》款



6059 (two views)

6060
**AN INSIDE-PAINTED GLASS
 SNUFF BOTTLE**

Wang Xisan, 1982

Of compressed ovoid form with a flat lip and splayed narrow oval foot rim, the interior masterfully painted with a continuous scene of eight horses in a landscape with gently rolling mountains and gnarled pine trees, titled *Ba Jun Tu* (Eight Stallions), dated *renshu* (1982), and signed *Wang Xisan* with one painted seal.

2 1/2in (6.2cm)

\$2,000 - 3,000

1982年 王習三作 玻璃內畫「八駿圖」鼻煙壺
 《王戌秋月王習三作》款



6060 (two views)



6061 (four views)



6062 (two views)

6061

**AN INSIDE-PAINTED GLASS
SNUFF BOTTLE**

Wang Xisan, 1983

The tapering bottle with faceted sides and sloping shoulders, the interior painted with a continuous landscape with Diamond Head in the far horizon and a sailing boat behind palm trees, one side featuring a statue of King Kamehameha on a pedestal, inscribed with 'Beautiful Diamond Head' and 'the first King of Hawaii, Kamehameha', dated 1983 in Chinese, signed *Wang Xisan*, with one painted seal *Xisan*.

2 1/4in (5.7cm) high

\$2,000 - 3,000

1983年 王習三作 玻璃內畫卡美哈
梅哈大帝像鼻煙壺
《王習三作》款



6063 (two views)

6062

AN INSIDE-PAINTED GLASS SNUFF BOTTLE

Wang Xisan, 1983

The compressed globular bottle supported by a spreading oval foot ring, surmounted with two faux lion mask-and-ring handles to the narrow sides, masterfully painted on the interior walls with the eight Daoist immortals in a continuous landscape setting rendered in ink and colors of rich shades, one side titled *Baxian Chuhui* to echo the theme of the painting, dated *guihai* (1983), signed *Yihu Zhai zhuren Wang Xisan* (Master of the One Bottle Studio Wang Xisan), one red seal mark reading *Xisan*.

2 3/4in (7cm) high

\$3,000 - 5,000

1983年 王習三作 玻璃內畫「八仙初會」圖鼻煙壺
《癸亥杏月一壺齋主人王習三作》款

6063

A RARE INSIDE-PAINTED SELF-PORTRAIT CRYSTAL SNUFF BOTTLE

Wang Xisan, 1983

Of compressed form, with a flat lip and sloping shoulders, fixed ring handles to the sides, supported by an oval foot rim, one side with a self-portrait of Wang Xisan dated *guihai* (1983), dedicated to Joanna Lau Sullivan and signed Wang Xisan with a painted seal, the reverse with a calligraphic passage in running script on a ground imitating gold-fleck paper, dated *guihai* and signed Wang Xisan with one painted seal.

2 3/8in (5.3cm) high

\$3,000 - 5,000

Illustrated and Published

The International Chinese Snuff Bottle Society, *Journal*, Winter 2007, p.17, figs.44-45.

1983年 王習三作 水晶內畫王習三自畫像鼻煙壺
《癸亥盛夏自畫像於一壺齋贈蘇利氏夫人留念王習三》款



6064 (two views)

6064

**AN INSIDE-PAINTED GLASS
SNUFF BOTTLE**

Wang Xisan, 1983

Of compressed form with a flat lip and sloping shoulders, supported by an oval foot rim, one side painted with the Water Moon Guanyin and attendant, inscribed and signed *Yihu Jushi Wang Xisan jing hui* (painted with reverence by the Resident of the One Bottle Studio, Wang Xisan) with two painted seals, reversed with a blossoming lotus and dragonfly, dated *guihai* (1983) and signed *Wang Xisan* and *Yihu Zhai* with one painted seal.

2 1/4in (5.7cm) high

\$3,000 - 5,000

1983年 王習三作 玻璃內畫水月觀音鼻煙壺
《一壺居士王習三敬繪》款



6065 (two views)

6065

**AN INSIDE-PAINTED GLASS
SNUFF BOTTLE**

Wang Xisan, 1983

The slightly tapering rectangular bottle with rounded corners, painted on the interior sides with a bright color palette depicting 'Children at Play' in a garden setting; each side titled to match the theme, one side signed *Xisan* with one red seal, the verso dated *guihai* (1983), signed *Wang Xisan*, with an additional red seal mark.

2 1/2in (6.4cm) high

\$3,000 - 5,000

1983年 王習三作 玻璃內畫嬰戲圖鼻煙壺
《癸亥屯日月王習三》款

6066

**TWO INSIDE-PAINTED MINIATURE
GLASS SNUFF BOTTLES**

Wang Xisan, 1985

Su Fengyi, 2010

The first of elongated ovoid form tapering towards a spreading oval foot ring, the interior painted with fish swimming in a pond with water-plant, titled *yu zao* (fish and water-plant), dated *yichou* (1985), signed *Wang Xisan zuoyu Yihu Zhai*, one painted seal mark; the second of compressed globular form, the interior delicately painted to both sides with a bird perching on a blooming flower branch behind perforated rocks, titled *Fu Xiang* (floating fragrance), each side signed *Fengyi* with one painted seal mark.

1 5/8in (4.2cm) and 1 1/4in (3.2cm) high
\$3,000 - 5,000

1985年王習三作 玻璃內畫金魚紋鼻煙壺
《乙丑秋月王習三作於一壺齋》款
2010年蘇鳳翼作 玻璃內畫花鳥紋鼻煙壺
《浮香庚寅蘇鳳羽》款



6066 (two views of each)

6067

**AN INSIDE-PAINTED GLASS
SNUFF BOTTLE**

Attributed to Wang Xisan, 1988

Of flattened, faceted form, with a flat lip and an oval foot rim, one side painted with an autumn landscape, titled *Qiushan Yunying* (Mountain and clouds in Autumn), with a studio name *Yi Hu Zhai* (One Bottle Studio) followed with a painted seal, reversed by a snow landscape with a figure in a boat, dated *wuchen* (1988), one painted seal.

2 5/8in (6.8cm) high
\$3,000 - 5,000

1988年 傳王習三作
玻璃內畫「秋山雲影」圖鼻煙壺
《一壺齋》款



6067 (two views)



6068 (two views)

6068

AN INSIDE-PAINTED ROCK CRYSTAL SNUFF BOTTLE

Ye Zhongsan, 1902; the bottle, 1780-1880

Of thin dimensions, with a possibly reduced cylindrical neck, flat lip and oval foot ring, the interior painted in muted colors depicting a fisherman in his wind-swept raincoat standing in a boat on a mountain-surrounded river, the forefront bank with trees and a horse, inscribed as dedicated to *Yufeng*, dated *renyin* (1902), signed *Ye Zhongsan*, one seal mark.

2 1/8in (5.3cm) high

\$6,000 - 8,000

壺:1780-1880年 內畫:1902年葉仲三作

水晶內畫漁人駿馬圖鼻煙壺 《壬寅榴月作於京師葉仲三》款

6069

A CARVED AND INSIDE-PAINTED ROCK CRYSTAL SNUFF BOTTLE

Ye Zhongsan, 1895, the bottle: 1750-1850
Well-hollowed, the compressed globular bottle carved on the exterior walls in low relief with elaborate pine trees rising precariously from rocky outcroppings, the interior painted with episodic scenes from the fiction work *Liaozhai Zhiyi*, one side featuring an interior scene with *Huan Niang* seated by a zither and two figures standing nearby, the reverse depicting *Qiao Niang* and other figures in a garden setting, dated *yiwai* (1895), signed *Ye Zhongsan*, one red seal mark.

2 5/16in (5.9cm) high

\$4,000 - 6,000

Liaozhai Zhiyi (Strange Tales from a Chinese Studio) is a collection of nearly 500 mostly supernatural tales written by Pu Songling in classical Chinese during the early Qing Dynasty. *Huan Niang* (Lady Zhao Huan) and *Qiao Niang* are two figures in the stories.

壺:1750-1850年 內畫:1895年葉仲三作
水晶內畫聊齋誌異圖鼻煙壺 《葉仲三作》款



6069 (two views)

6070

AN INSIDE-PAINTED FACETED ROCK CRYSTAL SNUFF BOTTLE

Ye Family Studio, 1916
The tapering bottle with symmetrically faceted sides, the interior painted in bright colors featuring the theme of *Zhongkui jia mei* (Zhongkui married off his young sister), with Zhongkui riding a donkey surrounded by *xiaogui* (small demons), followed by his sister in a cart and her attendant beneath five auspicious bats, dated *bingchen xiafu* (summer of 1916), with a *Ye Zhongsan* signature and one seal mark.

2 3/8in (6.1cm) high

\$3,000 - 5,000

1916年 葉氏家族風格 水晶內畫鍾馗嫁妹圖
鼻煙壺
《丙辰夏伏葉仲三作》款



6070 (two views)



6071 (two views)

6071

AN INSIDE-PAINTED GLASS SNUFF BOTTLE

Yan Yutian, 1918

Of rounded rectangular form with a slightly flared cylindrical neck, the interior finely painted on one side with two figures seated in a mountainside dwelling by a lake, and sheltered under large trees; inscribed *Huaqing Yawan* (Elegant trinket of Huaqing), the reverse depicting two exotic birds perched on a thick tree trunk above chrysanthemum flowers; dated *wuwu* (1918), signed *Yutian Yan shi* and followed with one red seal mark.

2 1/4in (5.7cm) high

\$2,000 - 3,000

Yan Yutian (active 1894-1919) is believed to be a Manchu, but little is known of his life. He painted with a predominantly brown and grey palette, and most of his subjects are charming landscapes, still-lives, and birds. Yan dated most of his bottles either to 1895 or 1907; only a few are known dated 1918.

Compare one of his rare bottles, dated 1918, from the Paul Braga Collection, sold in our Hong Kong rooms, 24 November 2012, sale 20524, lot 47.

1918年 閻玉田作 玻璃內畫「華卿雅玩」鼻煙壺
《戊午玉田閻氏作》款



Lots 6081, 6079, 6073, 6078, 6072



6072

6072

AN INSIDE-PAINTED GLASS SNUFF BOTTLE

Ma Shaoxuan or Ma Family, 1908

Of compressed form with a flat lip and oval foot rim surrounding a convex foot, one side painted with scholars pointing at the sun with a four character inscription reading *Zhi ri gao sheng*, reversed by an inscription in regular script, dated *wushen* (1908), and signed Ma Shaoxuan with one painted artist's seal.

2 1/8in (5.4cm) high

\$3,000 - 5,000

The phrase 指日高陞 (*zhi ri gao sheng*) inscribed on the front of the bottle is a pun for 'official promotion within days' that conveys a wish for rising in rank. The poem on the reverse is the Tang dynasty poet Yang Juyuan's *Springtime East of the Capital*.

1908年 馬少宣或馬氏家族風格
玻璃內畫「指日高陞」圖鼻煙壺 《馬少宣》款

6073

**AN INSIDE-PAINTED GLASS
SNUFF BOTTLE**

Ma Shaoxuan, 1914

Of compressed form with a flat lip and oval foot rim surrounding a convex foot, one side painted with the legendary Eastern Han dynasty figure Zuo Ci indicated by the two-character inscription, the reverse with an inscription related to Zuo Ci, dated *jiayin* (1914) and signed Ma Shaoxuan with one painted seal.

2 1/4in (5.7cm) high

\$3,000 - 5,000

1914年 馬少宣作 玻璃內畫左慈像鼻煙壺
《馬少宣》款



6073 (two views)

6074

**AN INSIDE-PAINTED ROCK CRYSTAL
SNUFF BOTTLE**

Ma Family, 1898

The rounded rectangular bottle supported on a spreading oval foot, its neck flaring towards a flat lip, the interior painted to one side with a scholar pointing at a potted plant, his attendant holding a water pot squatting by another flower pot, the top inscribed with a two-line poem echoing the painted theme, followed with a seal reading *Shaoxuan*, the reverse dated *wuxu* (1898), inscribed with a poem, with a signature *Ma Shaoxuan* and an additional *Shaoxuan* seal mark.

2 1/2in (6cm) high

\$3,000 - 5,000

The poem describes a lively spring scene with people enjoying the colors and the pleasure that the season brings.

Compare a very similarly painted snuff bottle, inscribed with a different poem to the reverse side, signed *Ma Shaoxuan*, from the Collection of Margaret Polak, sold in our New York rooms, 24 March 2010, sale 18369, lot 169.

1898年 馬氏家族風格 玻璃內畫仕人賞花圖
鼻煙壺 《馬少宣》款



6074 (two views)



6075 (two views)

6075

AN INSIDE-PAINTED ROCK CRYSTAL SNUFF BOTTLE

Zhou Leyuan, 1891

Of slender tapering form, with a cylindrical neck, subtly recessed lip, spreading oval foot ring, the interior exquisitely painted with a delicate tree extending diagonally over a pond with fish and various insects either in flight or on moss-covered rocks, one side dated *xinmou qiuyue* (the month of autumn in 1891), signed *Zhou Leyuan* with his studio name *Ouxiang Zhai* (the Studio of Lotus-Root Fragrance), one seal reading *Yuan yin*.

3in (7.6cm) high

\$2,500 - 4,000

This work exemplifies the artist's excellent command of composition and his superb ability to present the finest details in nature. The fresh and subtle blue applied in this painting is a unique and signature color that Zhou Leyuan experimented with in the middle of his career. Compare another inside-painted snuff bottle by Zhou Leyuan with similar blue color decoration, dated 1890, illustrated in the exhibition catalog *Chinese Snuff Bottles: A Miniature Art from the Collection of George and Mary Bloch*, Hong Kong Museum of Art, 1994, pp. 387-388, no. 316.

1891年 周樂元作 水晶內畫昆蟲池塘圖鼻煙壺
《藕香齋周樂元》款



6076 (two views)

6076

AN INSIDE-PAINTED GLASS SNUFF BOTTLE

In the style of Zhou Leyuan, 1894

The elongated tapering bottle supported on a splayed oval foot, with a cylindrical neck, flat lip, the front and back painted in soft-hued colors with two grazing horses in an open grassland separated by an aged willow tree, one side dated *jiawu* (1894), bearing a signature *Zhou Leyuan*, followed with a seal mark painted in red.

2 9/19in (6.5cm) high

\$2,500 - 4,000

1894年 周樂元風格 玻璃內畫駿馬圖鼻煙壺
《周樂元》款

6077

**AN ENAMELED MILKY-WHITE GLASS
SNUFF BOTTLE**

Qianlong mark, attributed to Yangzhou,
1770-1830

Of ovoid form with a cylindrical neck, flat lip, projecting oval foot, the exterior worked in enamels of pleasant shades depicting hibiscus, chrysanthemum, and other foliage near rocks, the underside with the *four-character mark* in seal script painted in iron red.

2 1/16in (5.2cm)

\$2,000 - 3,000

Some scholarship argues that a distinctive group of glass bottles was produced in Yangzhou for the Court between 1767 and 1799, or perhaps even later. Bottles of this type are seen with either the Qianlong reign mark or the Guyue Xuan mark. For further discussion regarding this group of enameled glass bottles, refer to "Mysteries of the Ancient Moon", Hugh Moss, *The International Chinese Snuff Bottle Society Journal*, Spring 2006, pp. 31-32.

Yangzhou enamels are thinner and applied in a more painterly manner than those on wares executed by the Beijing workshops. Refer to an enameled glass snuff bottle painted in a similar palette and in a comparable style, with Qianlong mark, sold in our New York rooms, 16 September 2013, sale 20998, lot 8011. Compare also a similarly painted white glass bottle, dated to the late 18th century, sold with the J & J Collection at Christie's New York, 17 September 2008, lot 85.

1770-1830年 傳揚州作坊 涅白料胎畫瑤瓏花卉圖鼻煙壺 《乾隆年製》篆書款

6078

**AN ENAMELED MILK GLASS
SNUFF BOTTLE**

Guyue Xuan mark, 19th century

Of flattened ovoid form, with a flat lip and straight foot, the opaque white glass with enamel ruyi lappets on the shoulder, one face with a scholar and boy holding a lotus, reversed by quails in landscape, with traces of an iron red Guyue Xuan mark to the foot.

2 1/2in (6.2cm) high

\$2,000 - 3,000

十九世紀 涅白料胎畫瑤瓏鵪鶉圖鼻煙壺



6077 (two views)



6078 (two views)



6079



6080 (two views)



6081

6079

A RED OVERLAY GLASS SNUFF BOTTLE

1750-1820

Of compressed globular form with a convex lip, flared oval foot rim, fixed mask-and-ring handles on the sides, the front and back with confronting archaic *kui* dragons above a bat and *shou* medallion.

2 1/4in (5.7cm) high

\$1,200 - 1,500

1750-1820年 雪霏地套紅料福壽雙全紋鼻煙壺

6080

A FINE GREEN OVERLAY WHITE GLASS SNUFF BOTTLE

1750-1850

Of compressed baluster form with a cylindrical neck, flat lip, well-finished oval foot ring, the milky white bottle with opaque white flecks, applied with grass-green overlay and finely carved to the main sides with either a grasshopper or a praying mantis on a leafy gourd vine rising from a stylized rock, the narrow side flanked with two faux lion mask-and-ring handles.

2 7/8in (7.4cm) high

\$1,200 - 1,500

1750-1850年 白地套綠料螳螂紋鼻煙壺

6081

**A FINE RUBY-RED GLASS
SNUFF BOTTLE**

Imperial, Palace Workshops, Beijing
1730-1800

Of flattened shield form, with a wide mouth, flat lip and deeply concave foot, each of the narrow sides carved with a bat carrying a string of cash.

2 1/2in (6.2cm) high

\$1,200 - 1,800

The rich and vibrant red color seen in the Imperial Palace glassware was best described in 1702 by Wang Shizhen in *Xiangzhu biji* "red as flame". According to Emily Byrne Curtis, the composition of most of the red glass vessels from the Yongzheng and Qianlong period reigns contained gold. The brilliant red tone is caused by selective light scattering of the gold particles in the glass. Furthermore, an inventory made in 1752 of the materials used in the Imperial glass works recorded the presence of 'three liang of top quality gold leaf for mixing with glass'. The technology was successfully transferred from the court to Boshan, another glassmaking center in Shandong province, by 1820; see *Pure Brightness Shines Everywhere. The Glass of China*, p.18.

1730-1800年 御製透明寶石紅料「福在眼前」圖鼻煙壺



6082 (two views)

6082

**A CARVED CAMEO CHALCEDONY
SNUFF BOTTLE**

Official School, 1770-1850

Very well-hollowed, of rounded square form with a cylindrical neck, flat lip, the translucent grayish stone with subtle horizontal band markings, utilizing the opaque brownish-ochre inclusions, cleverly carved with two horses under a pine tree branch on one side, the reverse with a conforming inscription arranged in four vertical lines, the underside worked with the natural milky white coloration in the stone, unusually designed with a split-tailed dragon within an oval foot ring.

2 1/4in (5.7cm) high

\$2,000 - 3,000

1770-1850年 玉髓巧雕松下駿馬圖鼻煙壺



6083

6083

**A CARVED CAMEO CHALCEDONY
SNUFF BOTTLE**

1820-1880

Well-hollowed, of flattened globular form with a slightly waisted neck, subtly recessed lip, spreading oval foot ring, worked with the dark inclusions in the gray-tinged honey color stone to portray a silhouette design of a cockerel on rocks with vegetation.

2 3/8in (6cm) high

\$3,000 - 5,000

1820-1880年 瑪瑙巧雕官上加官圖鼻煙壺



6084 (two views)

6084

**A MOLDED AND FAMILLE ROSE ENAMELED PORCELAIN
SNUFF BOTTLE**

Qianlong mark, 1800-1850

Of high shouldered flattened form with a deeply waisted neck painted in key-fret pattern, slightly convex lip, the interior unglazed, deftly molded around the side walls with Buddhist lions cavorting with ribbon-tied balls between a formalized cloud collar and a band of upright lappets surrounding an oval foot ring, enclosing the *four-character mark* in seal script; some of the molded details, as well as the mouth and foot rims picked out in gilt highlight.

2 1/2in (6.4cm) high

\$2,000 - 3,000

1800-1850年 模印粉彩雙獅戲球鼻煙壺 《乾隆年製》篆書款



Lots 6085, 6091, 6089 and 6086



6085 (two views of each)

6085

AN UNUSUAL PAIR OF CARVED WHITE JADE SNUFF BOTTLES

1880-1960

Each bottle of gently tapering profile with ogee edges, supported on a slightly spreading oval foot ring, with a cylindrical neck, subtly recessed lip, one side decorated with a mirror image to that of the other bottle, depicting geese swimming in a pond, the reverse side of both bottles with an identical four-character inscription reading *fei ming su shi*; the evenly hued stone with a faint celadon tone.

2 1/8in (5.4cm) high

\$3,000 - 5,000

Fei ming su shi is a phrase used in a music handbook titled *Gu Yin Zhengzong* (Orthodox School of Ancient Sounds). The book was compiled by Zhu Changfang in 1634 during the Ming dynasty. In seven folios, the book included tablatures of 50 ancient qin melodies. It also used poetic language to interpret the special beauty of each melody.

The phrase *fei ming su shi* describes the free and elegant nature of the geese portrayed by one of the Ten Chinese Qin Classics included in the book: *Ping Sha Luo Yan* (Wild Geese Descending to the Sandbank). The melody depicts an understated and yet extremely atmospheric and peaceful moment as a flock of geese descends towards a sandbank in the far horizon. The writer compares the freedom of these geese to the life of a hermit, and his desire to be as free as the birds he is watching.

1880-1960年 白玉雕「飛鳴宿食」圖鼻煙壺一對



6086 (two views)

6086

**AN EMBELLISHED AND INSCRIBED WHITE JADE
SNUFF BOTTLE**

The bottle: 1780-1900, embellishment: Tsuda family, Kyoto, Japan, 20th century

The rounded rectangular bottle supported on an oval foot ring, one side with an irregular contour to best retain the natural russet skin in the white stone, each main side decorated with colored stones and painted with an episodic scene depicting figures in an elaborate garden or in an interior setting, with possibly later added inscription, and one side bearing a signature *Ye Zhongsan* with one painted seal, dated *jisi* corresponding to 1929.

2 1/2in (6.4cm) high

\$6,000 - 8,000

壺:1780-1900年 嵌飾:二十世紀日本津田家族
白玉嵌寶石人物圖鼻煙壺



6087 (two views)

6087

**AN EMBELLISHED WHITE AND
RUSSET JADE SNUFF BOTTLE**

The bottle: 1820-1920, embellishment:
Tsuda family, Kyoto, Japan, 20th century
Well-hollowed, the bottle of rounded
rectangular form with a small oval
recessed base, one side of convex
profile, decorated with applied stones,
carved and painted with a seated woman
gazing thoughtfully at flowers in a vase
on a low table, the reverse side with an
uneven surface and marked with russet
inclusions, decorated in the same overlay
fashion, depicting archaic vessels,
auspicious decorations, and scholar's
objects.

2 1/8in (5.4cm) high

\$2,500 - 4,000

壺:1820-1920年 嵌飾:二十世紀日本津
田家族飾
白玉嵌寶石美人博古圖鼻煙壺



6088 (two views)

6088

**A WHITE JADE SNUFF BOTTLE
WITH EMBELLISHED FIGURAL
DECORATION**

The bottle: 1820-1900, embellishment:
Tsuda family, Kyoto, Japan, 20th century
Well-hollowed, of flattened baluster form
with a short, waisted neck, flat lip and
foot, the sides painted and adorned
with colored stones to present a slender
female figure in layered robes standing
under a flowering tree, the reverse
displaying a figure followed by a boy
holding a flower branch.

2 9/16in (6.5cm) high

\$3,000 - 5,000

壺: 1820-1900年 嵌飾:二十世紀日本津
田家族 白玉嵌寶石美人童子圖鼻煙壺

6089

A WHITE JADE SNUFF BOTTLE

1780-1880

Well-hollowed, the thin-sectioned bottle with a waisted neck, recessed lip, flat foot, each side with a circular reserve framing dense scrolling vines bearing leafy double-gourds; the stone of even white hue with a few spots of russet and milky inclusions.

2 1/4in (5.7cm) high

\$4,000 - 6,000

1780-1880年 白玉雕葫蘆紋鼻煙壺



6089 (two views)

6090

A WHITE JADE SNUFF BOTTLE

1820-1900

Well-hollowed, modeled in the form of a melon with undercut leafy and woody branches enmeshing the mouth, and the lower section decorated with a butterfly worked in low relief and carefully incised lines; the white stone displaying very faint oatmeal-like inclusions.

2 1/8in (5.3cm) high

\$3,000 - 5,000

1820-1900年 白玉雕瓜瓞綿綿鼻煙壺



6090



6091 (two views)

6091

**A WHITE AND RUSSET JADE
SNUFF BOTTLE**

1850-1940

The well-hollowed bottle in a natural pebble form, one side carved with the sun next to cloud scrolls above turbulent waves encircling the lower section of the bottle, the reverse inscribed *Ru ri fang sheng* (emerging like the rising sun); the white stone with patches of russet inclusions.

2 1/8in (5.4cm) high

\$3,000 - 5,000

1850-1940年 白玉雕「如日方昇」圖鼻煙壺



6092 (two views)

6092

**A WHITE AND RUSSET JADE
SNUFF BOTTLE**

Well-hollowed, the bottle of mostly square profile but with an uneven contour, with flat lip and foot, carved in relief and with densely incised lines to depict a horse with its head turned backward looking at a bee, one narrow side decorated with serrated rocks with indented details; the white stone with cloud-like inclusions and patches of rich russet skin.

2 3/8in (6cm) high

\$4,000 - 6,000

白玉雕駿馬紋鼻煙壺

6093

A CARVED WHITE JADE SNUFF BOTTLE

1800-1920

Well-hollowed, the melon form bottle decorated with well-carved leafy branches and butterflies; the stone with a faint celadon tinge marked with icy white specks.

2 7/8in (7.3cm) high

\$4,000 - 6,000

1800-1920年 白玉雕瓜瓞綿綿鼻煙壺



6093 (two views)

6094

A FINELY CARVED WHITE JADE SNUFF BOTTLE

1780-1850

Very well-hollowed, skillfully carved in relief and incised with overlapping leaves to resemble a bamboo shoot; the white stone with soft luster marked with milky white spots.

2 1/2in (6.4cm) high

\$3,000 - 5,000

Compare a very similar white jade snuff bottle from the Mary and George Bloch Collection, published and illustrated in the exhibition catalog *Chinese Snuff Bottles. A Miniature Art from the Collection of Mary and George Bloch*, Hong Kong Museum of Art, 18 March 1994 - 8 June 1994, no. 49, p. 103.

1780-1850年 白玉雕竹筍鼻煙壺



6094



6095 two views

6095

A WHITE JADE SNUFF BOTTLE

1800-1880

Very well-hollowed, in the form of a melon, the side walls decorated with a leafy flowering branch and a butterfly carved in low relief; the soft-hued white stone cast with faint russet inclusions.

2 3/8in (6cm) high

\$2,500 - 4,000

1800-1880年 白玉雕蝶戀花紋鼻煙壺



6096 two views

6096

A JADEITE SNUFF BOTTLE

1820-1860

Of compressed globular form with a concave circular foot, its neck flaring gently towards a recessed lip, carved to the main sides with raised animals, one utilizing the concentrated golden-russet inclusions in the pale green-toned stone to depict a Buddhist lion holding a 'brocade' ball in its mouth, opposing a caparisoned elephant, some details rendered with incised line.

1 15/16in (5cm) high

\$3,000 - 5,000

1820-1860年 翠玉雕雙獅戲球紋鼻煙壺



6097 (two views)

6097

A FINELY INSCRIBED WHITE JADE SNUFF BOTTLE

Possibly Imperial, 1750-1820

Well-hollowed, the spade-form bottle with a waisted neck, flat lip and finely recessed foot, one side lightly incised with secluded dwellings by a river under lush trees and sheltered by precipitous mountains, the reverse with an imperially inscribed poem matching the landscape scene; the grayish-white stone cast with buff and icy inclusions.

1 1/4in (5.7cm) high

\$10,000 - 15,000

1750-1820年 擬御製 白玉御題詩山水圖鼻煙壺



6098 (two views)



6099

6098

**A WHITE JADE PURSE-FORM
SNUFF BOTTLE**

1780-1850

The semicircular form bottle carved in rounded relief to the front and reverse with gathered pleats at the neck and shoulders above symmetrically designed leafy flowers, with a pair of apertures on the narrower sides of the neck for attachment; the white stone with russet markings.

1 13/16in (4.7cm) high

\$3,000 - 5,000

1780-1850年 白玉雕荷包式花卉紋鼻煙壺

6099

A CARVED WHITE JADE SNUFF BOTTLE

1850-1920

Well-hollowed, the slightly tapering bottle with rounded corners rising towards a cylindrical neck, subtly recessed lip, spreading oval foot ring, carved to the front with two galloping horses under a pine tree rising precariously from a hillside, the reverse undecorated; the grayish-white stone displaying off-white inclusions and natural fissure veins.

2 3/8in (6cm) high

\$3,000 - 5,000

1850-1920年 白玉雕駿馬松下紋鼻煙壺

6100

A CARVED BLACK JADE SNUFF BOTTLE

1750-1850

Well-hollowed, of rounded rectangular form, with a gently waisted neck, flat lip, rounded oval foot ring, carved in low relief and coordinating the few pale celadon color patches in the otherwise evenly hued black stone with leafy double-gourds and scrolling tendrils, the reverse inscribed with four characters reading *Zi sun wan dai* (ten thousand generations of sons and grandsons).

2 5/8in (6.7cm) high

\$1,200 - 2,000

1750-1850年 黑玉雕「子孫萬代」圖鼻煙壺



6100 (two views)

6101

A WHITE JADE 'SHUANGXI' SNUFF BOTTLE

1780-1880

Well-hollowed, the rectangular bottle with cusped corners, standing on a conforming foot ring, with a cylindrical neck and flat lip, the narrower sides with raised mask-and-ring handles, separating two recessed reserves, each framing a double happiness character, the stone of an even white tone with limited milky inclusions.

2 1/4in (5.7cm) high

\$2,000 - 3,000

1780-1880年 白玉雕雙禧紋鼻煙壺



6101 (two views)



6102

6102

A GREEN JADEITE SNUFF BOTTLE

1780-1850

Well-hollowed, of compressed moonflask form, with a short inward-finished neck and flat lip, the surfaces undecorated, fully revealing the attractive apple-green color of the stone mottled with lighter shades.

2in (5.1cm) high

\$1,200 - 1,500

1780-1850年 翠玉光素鼻煙壺

END OF SALE

Auction Registration Form

(Attendee / Absentee / Online / Telephone Bidding)

Please circle your bidding method above.

--	--	--	--

Paddle number (for office use only)

General Notice: This sale will be conducted in accordance with Bonhams Conditions of Sale, and your bidding and buying at the sale will be governed by such terms and conditions. Please read the Conditions of Sale in conjunction with the Buyer's Guide relating to this sale and other published notices and terms relating to bidding. Payment by personal or business check may result in your property not being released until purchase funds clear our bank. Checks must be drawn on a U.S. bank.

Notice to Absentee Bidders: In the table below, please provide details of the lots on which you wish to place bids at least 24 hours prior to the sale. Bids will be rounded down to the nearest increment. Please refer to the Buyer's Guide in the catalog for further information relating to instructions to Bonhams to execute absentee bids on your behalf. Bonhams will endeavor to execute bids on your behalf but will not be liable for any errors or non-executed bids.

Notice to First Time Bidders: New clients are requested to provide photographic proof of ID - passport, driving license, ID card, together with proof of address - utility bill, bank or credit card statement etc. Corporate clients should also provide a copy of their articles of association / company registration documents, together with a letter authorizing the individual to bid on the company's behalf. Failure to provide this may result in your bids not being processed. For higher value lots you may also be asked to provide a bankers reference.

Notice to online bidders; If you have forgotten your username and password for www.bonhams.com, please contact Client Services.

If successful

- I will collect the purchases myself
- Please contact me with a shipping quote (if applicable)
- I will arrange a third party to collect my purchase(s)

Please mail or fax the completed Registration Form and requested information to:

Bonhams Client Services Department
 580 Madison Avenue
 New York, New York 10022
 Tel +1 (212) 644 9001
 Fax +1 (212) 644 9009
 Automated Auction Results
 Tel +1 (415) 503 3410

Bonhams

Sale title:		Sale date:	
Sale no.		Sale venue:	
General Bid Increments:			
\$10 - 200by 10s		\$10,000 - 20,000by 1,000s	
\$200 - 500by 20 / 50 / 80s		\$20,000 - 50,000by 2,000 / 5,000 / 8,000s	
\$500 - 1,000by 50s		\$50,000 - 100,000by 5,000s	
\$1,000 - 2,000by 100s		\$100,000 - 200,000by 10,000s	
\$2,000 - 5,000by 200 / 500 / 800s		above \$200,000at the auctioneer's discretion	
\$5,000 - 10,000by 500s		The auctioneer has discretion to split any bid at any time.	
Customer Number		Title	
First Name		Last Name	
Company name (to be invoiced if applicable)			
Address			
City		County / State	
Post / Zip code		Country	
Telephone mobile		Telephone daytime	
Telephone evening		Fax	
Telephone bidders: indicate primary and secondary contact numbers by writing ① or ② next to the telephone number.			
E-mail (in capitals) _____			
By providing your email address above, you authorize Bonhams to send you marketing materials and news concerning Bonhams and partner organizations. Bonhams does not sell or trade email addresses.			
I am registering to bid as a private client <input type="checkbox"/>		I am registering to bid as a trade client <input type="checkbox"/>	
Resale: please enter your resale license number here _____ We may contact you for additional information.			

SHIPPING	
Shipping Address (if different than above):	
Address: _____	Country: _____
City: _____	Post/ZIP code: _____

Please note that all telephone calls are recorded.

Type of bid (A-Absentee, T-Telephone)	Lot no.	Brief description (In the event of any discrepancy, lot number and not lot description will govern.) If you are bidding online there is no need to complete this section.	MAX bid in US\$ (excluding premium and applicable tax) Emergency bid for telephone bidders only*

You instruct us to execute each absentee bid up to the corresponding bid amount indicated above.

* Emergency Bid: A maximum bid (exclusive of Buyer's Premium and tax) to be executed by Bonhams **only** if we are unable to contact you by telephone or should the connection be lost during bidding.

BY SIGNING THIS FORM YOU AGREE THAT YOU HAVE READ AND UNDERSTAND OUR CONDITIONS OF SALE AND SHALL BE LEGALLY BOUND BY THEM, AND YOU AGREE TO PAY THE BUYER'S PREMIUM, ANY APPLICABLE TAXES, AND ANY OTHER CHARGES MENTIONED IN THE BUYER'S GUIDE OR CONDITIONS OF SALE. THIS AFFECTS YOUR LEGAL RIGHTS.	
Your signature: _____	Date: _____

BUYER'S GUIDE

BIDDING & BUYING AT AUCTION

Whether you are an experienced bidder or an enthusiastic novice, auctions provide a stimulating atmosphere unlike any other. Bonhams previews and sales are free and open to the public. As you will find in these directions, bidding and buying at auction is easy and exciting. Should you have any further questions, please visit our website at www.bonhams.com or call our Client Services Department at +1 (800) 223 2854 ext. 3550.

Catalogs

Before each auction we publish illustrated catalogs. Our catalogs provide descriptions and estimated values for each "lot." A lot may refer to a single item or to a group of items auctioned together. The catalogs also include the dates and the times for the previews and auctions. We offer our catalogs by subscription or by single copy. For information on subscribing to our catalogs, you may refer to the subscription form in this catalog, call our Client Services Department, or visit our website at www.bonhams.com/us.

Previews

Auction previews are your chance to inspect each lot prior to the auction. We encourage you to look closely and examine each object on which you may want to bid so that you will know as much as possible about it. Except as expressly set forth in the Conditions of Sale, items are sold "as is" and with all faults; illustrations in our catalogs, website and other materials are provided for identification only. At the previews, our staff is always available to answer your questions and guide you through the auction process. Condition reports may be available upon request.

Estimates

Bonhams catalogs include low and high value estimates for each lot, exclusive of the buyer's premium and tax. The estimates are provided as an approximate guide to current market value based primarily on previous auction results for comparable pieces, and should not be interpreted as a representation or prediction of actual selling prices. They are determined well in advance of a sale and are subject to revision. Please contact us should you have any questions about value estimates.

Reserves

Unless indicated by the ρ symbol next to the lot number, which denotes no reserve, all lots in the catalog are subject to a reserve. The reserve is the minimum auction price that the consignor is willing to accept for a lot. This amount is confidential and does not exceed the low estimate value.

Auction House's Interest in Property Offered at Auction

On occasion, Bonhams may offer property in which it has an ownership interest in whole or in part or otherwise has an economic interest. Such property, if any, is identified in the catalog with a \blacktriangle symbol next to the lot number(s).

Bonhams may also offer property for a consignor that has been guaranteed a minimum price for its property by Bonhams or jointly by Bonhams and a third party. Bonhams and any third parties providing a guarantee may benefit financially if the guaranteed property is sold successfully and may incur a financial loss if its sale is not successful. Such property, if any, is identified in the catalog with a \circ symbol next to the lot number(s).

Bidding at Auction

At Bonhams, you can bid in many ways: in person, via absentee bid, over the phone, or via Bonhams' live online bidding facility. Absentee bids can be submitted in person, online, via fax or via email.

Valid Bonhams client accounts are required to participate in bidding activity. You can obtain registration information online, at the reception desk or by calling our Client Services Department.

By bidding at auction, whether in person or by agent, by absentee bid, telephone, online or other means, the buyer or bidder agrees to be bound by the Conditions of Sale.

Lots are auctioned in consecutive numerical order as they appear in the catalog. Bidding normally begins below the low estimate. The auctioneer will accept bids from interested parties present in the saleroom, from telephone bidders, and from absentee bidders who have left written bids in advance of the sale. The auctioneer may also execute bids on behalf of the consignor by placing responsive or consecutive bids for a lot up to the amount of the reserve, but never above it.

We assume no responsibility for failure to execute bids for any reason whatsoever.

In Person

If you are planning to bid at auction for the first time, you will need to register at the reception desk in order to receive a numbered bid card. To place a bid, hold up your card so that the auctioneer can clearly see it. Decide on the maximum auction price that you wish to pay, exclusive of buyer's premium and tax, and continue bidding until your bid prevails or you reach your limit. If you are the successful bidder on a lot, the auctioneer will acknowledge your paddle number and bid amount.

Absentee Bids

As a service to those wishing to place bids, we may at our discretion accept bids without charge in advance of auction online or in writing on bidding forms available from us. "Buy" bids will not be accepted; all bids must state the highest bid price the bidder is willing to pay. Our auction staff will try to bid just as you would, with the goal of obtaining the item at the lowest bid price possible. In the event identical bids are submitted, the earliest bid submitted will take precedence. Absentee bids shall be executed in competition with other absentee bids, any applicable reserve, and bids from other auction participants. A friend or agent may place bids on your behalf, provided that we have received your written authorization prior to the sale. Absentee bid forms are available in our catalogs, online at www.bonhams.com/us, at offsite auction locations, and at our San Francisco, Los Angeles and New York galleries.

By Telephone

Under special circumstances, we can arrange for you to bid by telephone. To arrange for a telephone bid, please contact our Client Services Department a minimum of 24 hours prior to the sale.

Online

We offer live online bidding for most auctions and accept absentee bids online for all our auctions. Please visit www.bonhams.com/us for details.

Bid Increments

Bonhams generally uses the following increment multiples as bidding progresses:

\$50-200	by \$10s
\$200-500	by \$20/50/80s
\$500-1,000	by \$50s
\$1,000-2,000	by \$100s
\$2,000-5,000	by \$200/500/800s
\$5,000-10,000	by \$500s
\$10,000-20,000	by \$1,000s
\$20,000-50,000	by \$2,000/5,000/8,000s
\$50,000-100,000	by \$5,000s
\$100,000-200,000	by \$10,000s
above \$200,000	at auctioneer's discretion

The auctioneer may split or reject any bid at any time at his or her discretion as outlined in the Conditions of Sale.

Currency Converter

Solely for the convenience of bidders, a currency converter may be provided at Bonhams' auctions. The rates quoted for conversion of other currencies to U.S. Dollars are indications only and should not be relied upon by a bidder, and neither Bonhams nor its agents shall be responsible for any errors or omissions in the operation or accuracy of the currency converter.

Buyer's Premium

A buyer's premium is added to the winning bid price of each individual lot purchased, at the rates set forth in the Conditions of Sale. The winning bid price plus the premium constitute the purchase price for the lot. Applicable sales taxes are computed based on this figure, and the total becomes your final purchase price.

Unless specifically illustrated and noted, fine art frames are not included in the estimate or purchase price. Bonhams accepts no liability for damage or loss to frames during storage or shipment.

All sales are final and subject to the Conditions of Sale found in our catalogs, on our website, and available at the reception desk.

Payment

All buyers are asked to pay and pick up by 3pm on the business day following the auction. Payment may be made to Bonhams by cash, checks drawn on a U.S. bank, money order, wire transfer, or by Visa, MasterCard, American Express or Discover credit or charge card or debit card. All items must be paid for within 5 business days of the sale. Please note that payment by personal or business check may result in property not being released until purchase funds clear our bank. For payments sent by mail, please remit to Cashier Department, 220 San Bruno Avenue, San Francisco, CA 94103.

Sales Tax

California, Arizona, Colorado, Connecticut, Florida, Georgia, Illinois, Nevada, New York, Massachusetts, Pennsylvania, Texas, Washington state and Washington DC residents must pay applicable sales tax. Other state or local taxes (or compensating use taxes) may apply. Sales tax will be automatically added to the invoice unless a valid resale number has been furnished or the property is shipped via common carrier to destinations outside the states listed above.

Shipping & Removal

Bonhams can accommodate shipping for certain items. Please contact our Cashiers Department for more information or to obtain a quote. Carriers are not permitted to deliver to PO boxes.

International buyers are responsible for all import/export customs duties and taxes. An invoice stating the actual purchase price will accompany all international purchases.

Collection of Purchases

Please arrange for the packing and transport of your purchases prior to collection at our office. If you are sending a third party shipper, please request a release form from us and return it to +1 (212) 644 9009 prior to your scheduled pickup. To schedule collection of purchases, please call +1 (212) 644 9001.

Handling and Storage Charges

Please note that our offices have requirements for freight elevator usage. Please contact us to schedule an elevator appointment for pickup of any large or awkward items. Bonhams will hold all purchased lots in our gallery until Friday March 25 without penalty. After March 25 collection of lots will be by appointment only. Please call +1 (212) 644 9001 at least 24 hours in advance to make an appointment.

Storage charges of \$5 per lot, per day will begin accruing for any lots not collected by the 31st day after the auction.

Bonhams reserves the right to remove uncollected sold lots to the warehouse of our choice at the buyer's risk and expense. Handling and storage fees will apply.

Auction Results

To find out the final purchase price for any lot following the sale, please call our automated auction results line at +1 (800) 223 2854 ext. 3400. All you need is a touch-tone telephone and the lot number. Auction results are usually available on the next business day following the sale or online at www.bonhams.com/us.

CONDITIONS OF SALE

The following Conditions of Sale, as amended by any published or posted notices or verbal announcements during the sale, constitute the entire terms and conditions on which property listed in the catalog shall be offered for sale or sold by Bonhams & Butterfields Auctioneers Corp. and any consignor of such property for whom we act as agent. If live online bidding is available for the subject auction, additional terms and conditions of sale relating to online bidding will apply; see www.bonhams.com/WebTerms for the supplemental terms. As used herein, "Bonhams," "we" and "us" refer to Bonhams & Butterfields Auctioneers Corp.

1. As used herein, the term "bid price" means the price at which a lot is successfully knocked down to the purchaser. The term "purchase price" means the aggregate of (a) the bid price, (b) a PREMIUM retained by us and payable by the purchaser EQUAL TO 25% OF THE FIRST \$100,000 OF THE BID PRICE, 20% OF THE AMOUNT OF THE BID PRICE ABOVE \$100,000 UP TO AND INCLUDING \$2,000,000, AND 12% OF THE AMOUNT OF THE BID PRICE OVER \$2,000,000, and (c) unless the purchaser is exempt by law from the payment thereof, any California, Arizona, Colorado, Connecticut, Florida, Georgia, Illinois, Massachusetts, Nevada, New York, Pennsylvania, Texas, Washington, D.C., Washington state, or other state or local sales tax (or compensating use tax) and other applicable taxes.

2. On the fall of the auctioneer's hammer, the highest bidder shall have purchased the offered lot in accordance and subject to compliance with all of the conditions set forth herein and (a) assumes full risk and responsibility therefor, (b) if requested will sign a confirmation of purchase, and (c) will pay the purchase price in full or such part as we may require for all lots purchased. No lot may be transferred. Any person placing a bid as agent on behalf of another (whether or not such person has disclosed that fact or the identity of the principal) may be jointly and severally liable with the principal under any contract resulting from the acceptance of a bid.

Unless otherwise agreed, payment in good funds is due and payable within five (5) business days following the auction sale. Whenever the purchaser pays only a part of the total purchase price for one or more lots purchased, we may apply such payments, in our sole discretion, to the lot or lots we choose. Payment will not be deemed made in full until we have collected good funds for all amounts due.

Payment for purchases may be made in or by (a) cash, (b) cashier's check or money order, (c) personal check with approved credit drawn on a U.S. bank, (d) wire transfer or other immediate bank transfer, or (e) Visa, MasterCard, American Express or Discover credit, charge or debit card. A processing fee will be assessed on any returned checks. Please note that the amount of cash notes and cash equivalents that can be accepted from a given purchaser may be limited.

The purchaser grants us a security interest in the property, and we may retain as collateral security for the purchaser's obligations to us, any property and all monies held or received by us for the account of the purchaser, in our possession. We retain all rights of a secured party under the California Commercial Code. If the foregoing conditions or any other applicable conditions herein are not complied with, in addition to other remedies available to us and the consignor by law, including without limitation, the right to hold the purchaser liable for the purchase price, we at our option may either (a) cancel the sale, retaining as liquidated damages all payments made by the purchaser or (b) resell the property, either publicly or privately, and in such event the purchaser shall be liable for

the payment of any deficiency plus all costs and expenses of both sales, our commission at our standard rates, all other charges due hereunder, attorneys' fees, expenses and incidental damages. In addition, where two or more amounts are owed in respect of different transactions by the purchaser to us, to Bonhams 1793 Limited and/or to any of our other affiliates, subsidiaries or parent companies worldwide within the Bonhams Group, we reserve the right to apply any monies paid in respect of a transaction to discharge any amount owed by the purchaser. If all fees, commissions, premiums, bid price and other sums due to us from the purchaser are not paid promptly as provided in these Conditions of Sale, we reserve the right to impose a finance charge equal to 1.5% per month on all amounts due to us beginning on the 31st day following the sale until payment is received, in addition to other remedies available to us by law.

3. We reserve the right to withdraw any property and to divide and combine lots at any time before such property's auction. Unless otherwise announced by the auctioneer at the time of sale, all bids are per lot as numbered in the catalog and no lots shall be divided or combined for sale.

4. We reserve the right to reject a bid from any bidder, to split any bidding increment, and to advance the bidding in any manner the auctioneer may decide. In the event of any dispute between bidders, or in the event the auctioneer doubts the validity of any bid, the auctioneer shall have sole and final discretion either to determine the successful bidder or to re-offer and resell the article in dispute. If any dispute arises after the sale, our sales records shall be conclusive in all respects.

5. If we are prevented by fire, theft or any other reason whatsoever from delivering any property to the purchaser or a sale otherwise cannot be completed, our liability shall be limited to the sum actually paid therefor by the purchaser and shall in no event include any compensatory, incidental or consequential damages.

6. If a lot is offered subject to a reserve, we may implement such reserve by bidding on behalf of the consignor, whether by opening bidding or continuing bidding in response to other bidders until reaching the reserve. If we have an interest in an offered lot and the proceeds therefrom other than our commissions, we may bid therefor to protect such interest. **CONSIGNORS ARE NOT ALLOWED TO BID ON THEIR OWN ITEMS.**

7. All statements contained in the catalog or in any bill of sale, condition report, invoice or elsewhere as to authorship, period, culture, source, origin, measurement, quality, rarity, provenance, importance, exhibition and literature of historical relevance, or physical condition **ARE QUALIFIED STATEMENTS OF OPINION AND NOT REPRESENTATIONS OR WARRANTIES.** No employee or agent of Bonhams is authorized to make on our behalf or on that of the consignor any representation or warranty, oral or written, with respect to any property.

8. All purchased property shall be removed from the premises at which the sale is conducted by the date(s) and time(s) set forth in the "Buyer's Guide" portion of the catalog. If not so removed, daily storage fees will be payable to us by the purchaser as set forth therein. We reserve the right to transfer property not so removed to an offsite warehouse at the purchaser's risk and expense, as set forth in more detail in the "Buyer's Guide." Accounts must be settled in full before property will be released. Packing and handling of purchased lots are the responsibility of the purchaser. Bonhams can provide packing and shipping services for certain items as noted in the "Buyer's Guide" section of the catalog.

9. The copyright in the text of the catalog and the photographs, digital images and illustrations of lots in the catalog belong to Bonhams or its licensors. You will not reproduce or permit anyone else to reproduce such text, photographs, digital images or illustrations without our prior written consent.

10. These Conditions of Sale shall bind the successors and assigns of all bidders and purchasers and inure to the benefit of our successors and assigns. No waiver, amendment or modification of the terms hereof (other than posted notices or oral announcements during the sale) shall bind us unless specifically stated in writing and signed by us. If any part of these Conditions of Sale is for any reason invalid or unenforceable, the rest shall remain valid and enforceable.

11. These Conditions of Sale and the purchaser's and our respective rights and obligations hereunder are governed by the laws of the State of California. By bidding at an auction, each purchaser and bidder agrees to be bound by these Conditions of Sale. Any dispute, controversy or claim arising out of or relating to this agreement, or the breach, termination or validity thereof, brought by or against Bonhams (but not including claims brought against the consignor by the purchaser of lots consigned hereunder) shall be resolved by the procedures set forth below.

MEDIATION AND ARBITRATION PROCEDURES

(a) Within 30 days of written notice that there is a dispute, the parties or their authorized and empowered representatives shall meet by telephone and/or in person to mediate their differences. If the parties agree, a mutually acceptable mediator shall be selected and the parties will equally share such mediator's fees. The mediator shall be a retired judge or an attorney familiar with commercial law and trained in or qualified by experience in handling mediations. Any communications made during the mediation process shall not be admissible in any subsequent arbitration, mediation or judicial proceeding. All proceedings and any resolutions thereof shall be confidential, and the terms governing arbitration set forth in paragraph (c) below shall govern.

(b) If mediation does not resolve all disputes between the parties, or in any event no longer than 60 days after receipt of the written notice of dispute referred to above, the parties shall submit the dispute for binding arbitration before a single neutral arbitrator. Such arbitrator shall be a retired judge or an attorney familiar with commercial law and trained in or qualified by experience in handling arbitrations. Such arbitrator shall make all appropriate disclosures required by law. The arbitrator shall be drawn from a panel of a national arbitration service agreed to by the parties, and shall be selected as follows: (i) If the national arbitration service has specific rules or procedures, those rules or procedures shall be followed; (ii) If the national arbitration service does not have rules or procedures for the selection of an arbitrator, the arbitrator shall be an individual jointly agreed to by the parties. If the parties cannot agree on a national arbitration service, the arbitration shall be conducted by the American Arbitration Association, and the arbitrator shall be selected in accordance with the Rules of the American Arbitration Association. The arbitrator's award shall be in writing and shall set forth findings of fact and legal conclusions.

(c) Unless otherwise agreed to by the parties or provided by the published rules of the national arbitration service:

(i) the arbitration shall occur within 60 days following the selection of the arbitrator;

CONDITIONS OF SALE - CONTINUED

(ii) the arbitration shall be conducted in the designated location, as follows: (A) in any case in which the subject auction by Bonhams took place or was scheduled to take place in the State of New York or Connecticut or the Commonwealth of Massachusetts, the arbitration shall take place in New York City, New York; (B) in all other cases, the arbitration shall take place in the city of San Francisco, California; and

(iii) discovery and the procedure for the arbitration shall be as follows:

(A) All arbitration proceedings shall be confidential;

(B) The parties shall submit written briefs to the arbitrator no later than 15 days before the arbitration commences;

(C) Discovery, if any, shall be limited as follows: (I) Requests for no more than 10 categories of documents, to be provided to the requesting party within 14 days of written request therefor; (II) No more than two (2) depositions per party, provided however, the deposition(s) are to be completed within one (1) day; (III) Compliance with the above shall be enforced by the arbitrator in accordance with California law;

(D) Each party shall have no longer than eight (8) hours to present its position. The entire hearing before the arbitrator shall not take longer than three (3) consecutive days;

(E) The award shall be made in writing no more than 30 days following the end of the proceeding. Judgment upon the award rendered by the arbitrator may be entered by any court having jurisdiction thereof.

To the fullest extent permitted by law, and except as required by applicable arbitration rules, each party shall bear its own attorneys' fees and costs in connection with the proceedings and shall share equally the fees and expenses of the arbitrator.

LIMITED RIGHT OF RESCISSION

If within one (1) year from the date of sale, the original purchaser (a) gives written notice to us alleging that the identification of Authorship (as defined below) of such lot as set forth in the **BOLD TYPE** heading of the catalog description of such lot (as amended by any saleroom notices or verbal announcements during the sale) is not substantially correct based on a fair reading of the catalog (including the terms of any glossary contained therein), and (b) within 10 days after such notice returns the lot to us in the same condition as at the time of sale, and (c) establishes the allegation in the notice to our satisfaction (including by providing one or more written opinions by recognized experts in the field, as we may reasonably require), then the sale of such lot will be rescinded and, unless we have already paid to the consignor monies owed him in connection with the sale, the original purchase price will be refunded.

If, prior to receiving such notice from the original purchaser alleging such defect, we have paid the consignor monies owed him in connection with the sale, we shall pay the original purchaser the amount of our commissions, any other sale proceeds to which we are entitled and applicable taxes received from the purchaser on the sale and make demand on the consignor to pay the balance of the original purchase price to the original purchaser. Should the consignor fail to pay such amount promptly, we may disclose the identity of the consignor and assign to the original purchaser our rights against the consignor with respect to the lot the sale of which is sought to be rescinded. Upon such disclosure and assignment, any liability of Bonhams as consignor's agent with respect to said lot shall automatically terminate.

The foregoing limited right of rescission is available to the original purchaser only and may not be assigned to or relied upon by any subsequent transferee of the property sold. The purchaser hereby accepts the benefit of the consignor's warranty of title and other representations and warranties made by the consignor for the purchaser's benefit. Nothing in this section shall be construed as an admission by us of any representation of fact, express or implied, obligation or responsibility with respect to any lot. **THE PURCHASER'S SOLE AND EXCLUSIVE REMEDY AGAINST BONHAMS FOR ANY**

REASON WHATSOEVER IS THE LIMITED RIGHT OF RESCISSION DESCRIBED IN THIS SECTION.

"Authorship" means only the identity of the creator, the period, culture and source or origin of the lot, as the case may be, as set forth in the **BOLD TYPE** heading of the print catalog entry. The right of rescission does not extend to: (a) works of art executed before 1870 (unless these works are determined to be counterfeits created since 1870), as this is a matter of current scholarly opinion which can change; (b) titles, descriptions, or other identification of offered lots, which information normally appears in lower case type below the **BOLD TYPE** heading identifying the Authorship; (c) Authorship of any lot where it was specifically mentioned that there exists a conflict of specialist or scholarly opinion regarding the Authorship of the lot at the time of sale; (d) Authorship of any lot which as of the date of sale was in accordance with the then generally-accepted opinion of scholars and specialists regarding the same; or (e) the identification of periods or dates of creation in catalog descriptions which may be proven inaccurate by means of scientific processes that are not generally accepted for use until after publication of the catalog in which the property is offered or that were unreasonably expensive or impractical to use at the time of such publication.

LIMITATION OF LIABILITY

EXCEPT AS EXPRESSLY PROVIDED ABOVE, ALL PROPERTY IS SOLD "AS IS." NEITHER BONHAMS NOR THE CONSIGNOR MAKES ANY REPRESENTATION OR WARRANTY, EXPRESS OR IMPLIED, AS TO THE MERCHANTABILITY, FITNESS OR CONDITION OF THE PROPERTY OR AS TO THE CORRECTNESS OF DESCRIPTION, GENUINENESS, ATTRIBUTION, PROVENANCE OR PERIOD OF THE PROPERTY OR AS TO WHETHER THE PURCHASER ACQUIRES ANY COPYRIGHTS OR OTHER INTELLECTUAL PROPERTY RIGHTS IN LOTS SOLD OR AS TO WHETHER A WORK OF ART IS SUBJECT TO THE ARTIST'S MORAL RIGHTS OR OTHER RESIDUAL RIGHTS OF THE ARTIST. THE PURCHASER EXPRESSLY ACKNOWLEDGES AND AGREES THAT IN NO EVENT SHALL BONHAMS BE LIABLE FOR ANY DAMAGES INCLUDING, WITHOUT LIMITATION, ANY COMPENSATORY, INCIDENTAL OR CONSEQUENTIAL DAMAGES.

SELLER'S GUIDE

SELLING AT AUCTION

Bonhams can help you every step of the way when you are ready to sell art, antiques and collectible items at auction. Our regional offices and representatives throughout the US are available to service all of your needs. Should you have any further questions, please visit our website at www.bonhams.com/us for more information or call our Client Services Department at +1 (800) 223 2854 ext. 23550.

AUCTION ESTIMATES

The first step in the auction process is to determine the auction value of your property. Bonhams' world-renowned specialists will evaluate your special items at no charge and in complete confidence. You can obtain an auction estimate in many ways:

- Attend one of our Auction Appraisal Events held regularly at our galleries and in other major metropolitan areas. The updated schedule for Bonhams Auction Appraisal Events is available at www.bonhams.com/us.
- Call our Client Services Department to schedule a private appointment at one of our galleries. If you have a large collection, our specialists can travel, by appointment, to evaluate your property on site.
- Send clear photographs to us of each individual item, including item dimensions and other pertinent information with each picture. Photos should be sent to Bonhams' address in envelopes marked

as "photo auction estimate". Alternatively, you can submit your request using our online form at www.bonhams.com/us. Digital images may be attached to the form. Please limit your images to no more than five (5) per item.

CONSIGNING YOUR PROPERTY

After you receive an estimate, you may consign your property to us for sale in the next appropriate auction. Our staff assists you throughout the process, arranging transportation of your items to our galleries (at the consignor's expense), providing a detailed inventory of your consignment, and reporting the prices realized for each lot. We provide secure storage for your property in our warehouses and all items are insured throughout the auction process. You will receive payment for your property approximately 35 days after completion of sale.

Sales commissions vary with the potential auction value of the property and the particular auction in which the property is offered. Please call us for commission rates.

PROFESSIONAL APPRAISAL SERVICES

Bonhams' specialists conduct insurance and fair market value appraisals for private collectors, corporations, museums, fiduciaries and government entities on a daily basis. Insurance appraisals, used for insurance purposes, reflect the cost of replacing property in today's retail market. Fair market value appraisals are used for estate,

tax and family division purposes and reflect prices paid by a willing buyer to a willing seller.

When we conduct a private appraisal, our specialists will prepare a thorough inventory listing of all your appraised property by category. Valuations, complete descriptions and locations of items are included in the documentation.

Appraisal fees vary according to the nature of the collection, the amount of work involved, the travel distance, and whether the property is subsequently consigned for auction.

Our appraisers are available to help you anywhere and at any time. Please call our Client Services Department to schedule an appraisal.

ESTATE SERVICES

Since 1865, Bonhams has been serving the needs of fiduciaries – lawyers, trust officers, accountants and executors – in the disposition of large and small estates. Our services are specially designed to aid in the efficient appraisal and disposition of fine art, antiques, jewelry, and collectibles. We offer a full range of estate services, ranging from flexible financial terms to tailored accounting for heirs and their agents to world-class marketing and sales support.

For more information or to obtain a detailed Trust and Estates package, please visit our website at www.bonhams.com/us or contact our Client Services Department.

TYPICAL HEADINGS USED IN THE CATALOG

The following are examples of the terminology used in the catalog. While every reasonable effort has been made to ensure that the statements made in the catalog are correct, all statements and terms in this catalog are subject to the provisions of the Conditions of Sale and the Galleries and Consignors make no warranties or representations with respect to any lot.

AUTHORSHIP**WANG HUI**

The piece is, in our opinion, a work of the artist.

ATTRIBUTED TO WANG HUI

The piece is, in our opinion, from the period of the artist and possibly by his hand.

SCHOOL OF WANG HUI

The piece is, in our opinion, in the style of the artist, possibly of a later period.

AFTER WANG HUI

The piece is, in our opinion, a copy done in the spirit of the artist.

“SIGNED”

The piece has a signature which, in our opinion, is that of the artist.

“BEARING THE SIGNATURE OF” OR “INSCRIBED”

The piece has a signature which, in our opinion, might be spurious or that of a later follower of the artist.

CERAMICS, PORCELAINS AND OTHER WORKS OF ART**FAMILLE VERTE OVOID VASE
KANGXI MARK AND PERIOD**

When the piece is, in our opinion, a work of that period, reign or dynasty and marked as such, the date and mark appear in bold below the description.

**FAMILLE VERTE OVOID VASE
KANGXI PERIOD**

When the piece is, in our opinion, a work of that period, reign or dynasty, the date appears in bold below the description.

**FAMILLE VERTE OVOID VASE
KANGXI MARK**

When the piece, in our opinion, was manufactured during the 20th century or later, or when its date of manufacture is unclear, but bears a mark, the mark appears alone in bold below the description.

FAMILLE VERTE OVOID VASE

When the piece, in our opinion, was manufactured during the 20th century or later, or when its date of manufacture is unclear, no date appears below its bold description.

PHYSICAL CONDITION OF LOTS IN THIS AUCTION

PLEASE NOTE THAT THERE IS NO REFERENCE IN THIS CATALOG TO THE PHYSICAL CONDITION OF ANY LOT. INTENDING BIDDERS MUST SATISFY THEMSELVES AS TO THE CONDITION OF ANY LOTS AS SPECIFIED IN THE ‘LIMITATION OF LIABILITY’ IN THE ‘CONDITIONS OF SALE.’

As a courtesy to intending bidders, Bonhams will provide a written indication of the physical condition of lots in this sale if a request is received up to 24 hours before the auction starts. Such report is also available for download from Bonhams website.

REGULATED SPECIES MATERIALS AND CITES PERMITS

The export of a lot from the United States or import into certain countries may be subject to export or import regulations, licensure and/or other restrictions; in particular, lots containing plant or animal materials such as ivory, rhinoceros horn, tortoiseshell, coral, whalebone or certain types of woods, irrespective of age or value, may require the granting of one or more export or import licenses or certificates, or may be banned from import altogether by some countries. Moreover, the ability to obtain an export license or certificate does not insure the ability to obtain an import license or certificate in another country. Lots that contain such regulated species materials may also not be eligible for exportation or for re-importation into the United States if they are not at least 100 years of age, and, under current law, lots containing African Elephant Ivory may no longer be re-imported into the United States regardless of age. In addition, resales of lots containing certain regulated species materials may be subject to restrictions in some jurisdictions.

Lots noted in the catalog with a **Y** next to the lot number contain one or more such regulated plant or animal materials. **It is the buyer's responsibility to investigate any such restrictions and to obtain any relevant export or import licenses. Please note that this process is governed by local authorities and may take considerable time. Regardless of any delay in the obtaining of an export or import license or certificate or denial of a license's or certificate's issuance, purchased lots shall be paid for in accordance with the Conditions of Sale, and any such delay or denial shall not serve as the basis for cancellation of any sale.** Prospective buyers are advised to obtain information from the relevant regulatory authorities regarding export and import restrictions, requirements, and costs prior to bidding.

Prospective buyers should also check with their local (e.g. state) regulatory authorities regarding any local restrictions and/or permit requirements that may apply with respect to purchases of regulated species materials, including without limitation purchases of items containing elephant ivory or rhino horn. For example, we are advised that New York buyers of any lot containing elephant or mammoth ivory or rhino horn will be responsible for obtaining a New York State permit before taking possession of the lot within New York State, and that the State of New Jersey has banned the import of items containing elephant or marine mammal ivory or rhino horn into that state.

Upon request, Bonhams can refer the purchaser to a third party agent to assist the purchaser in attempting to obtain the appropriate licenses and/or certificates. However, there is no assurance that any necessary licenses or certificates can be obtained. Please contact the Specialist Department for a suggested list of shipping agents prior to placing a bid if you are uncertain as to whether a lot is subject to export/import license or certificate requirements or related restrictions.

SNUFF BOTTLE DISCLAIMER

Unless otherwise specified in the cataloguing of a lot, snuff bottle stoppers are not included in any snuff bottle lots or in the estimate or purchase price of such a lot sold hereunder, regardless of whether the snuff bottle lot is illustrated with one or more stoppers. While Bonhams makes reasonable efforts to ensure that a stopper illustrated or exhibited with a snuff bottle lot accompanies the lot upon collection or release, it accepts no liability for not doing so or for damage or loss to stoppers during storage or shipment. In addition, if a snuff bottle lot is exhibited or purchased by a buyer outside the United States, Bonhams may remove any stopper accompanying a lot that contains restricted materials.

CHINESE WORKS OF ART

Monday March 14, 11am

New York

PREVIEW

March 10-13

+1 (917) 206 1613

olivia.hamilton@bonhams.com

FINE JADE CARVINGS

FROM THE JOANNA
LAU SULLIVAN TRUST

18th/19th century



Bonhams

NEW YORK

bonhams.com/chinese

**THE SZE YUAN TANG
COLLECTION OF
CHINESE JADES**

Tuesday 5 April 2016
Bonhams Hong Kong Gallery
Suite 2001, One Pacific Place
Hong Kong

**AN EXCEPTIONALLY RARE BROWN
JADE CEREMONIAL DAGGER, GE**

Warring States Period
20.9cm (8 1/4in) long

HK\$800,000-1,200,000

PREVIEWS

1 to 4 April, Hong Kong

ENQUIRIES

Hong Kong
+852 2918 4321
chinese.hk@bonhams.com



Bonhams

HONG KONG

ASIA WEEK

NEW YORK

紐約亞洲藝術週

March 10–19, 2016

Asia Week New York 2016 is a collaboration among Asian art specialists, 5 auction houses, and 19 museums and Asian cultural institutions in the metropolitan New York area from March 10–19, 2016. Simultaneous exhibitions presented by more than 40 prominent Asian art dealers from the U.S. and abroad, auctions at Bonhams, Christie's, Doyle New York, iGavel, and Sotheby's as well as dozens of special events are planned for this period. All exhibitions, auctions, and events will be listed in a comprehensive illustrated guide with maps, available at the participating galleries, auction houses, and cultural institutions in February 2016 as well as on the Asia Week New York website.

www.asiaweekny.com



子福
人福深

還持福

£ 1793

Bonhams

580 Madison Avenue
New York, New York 10022

+1 212 644 9001

+1 212 644 9009 (fax)

